

IMPORTANT JEWELS

London 30 July 2020



CHRISTIE'S







IMPORTANT JEWELS

THURSDAY 30 JULY 2020

AUCTION

Thursday 30 July 2020 at
11.00 am (Lots 1-236)

8 King Street, St. James's
London SW1Y 6QT

IMPORTANT NOTICE

Viewings and Auctions are conducted in accordance with local government advice pertaining to Covid 19 which may change from time to time. If you have questions regarding your visit to Christie's please contact our Client Service Department on +44 (0)20 7839 9060 or info@christies.com.

VIEWING

Saturday	25 July	12.00 pm – 5.00 pm
Sunday	26 July	12.00 pm – 5.00 pm
Monday	27 July	10.00 am – 6.00 pm
Tuesday	28 July	10.00 am – 6.00 pm
Wednesday	29 July	10.00 am – 6.00 pm

AUCTIONEERS

Charles Foley, James Hastie & Natalia Voinova

AUCTION CODE AND NUMBER

In sending absentee bids or making enquiries, this sale should be referred to as

VIRGINIE-18373

AUCTION RESULTS

Tel: +44 (0)20 7839 9060
christies.com

CONDITIONS OF SALE

This auction is subject to Important Notices, Conditions of Sale and to reserves.

Front cover: Lot 231
Inside front cover: Lots 197 and 163
Opposite: Lots 212, 222 and 223
Back cover: Lot 233



Browse this auction and view
real-time results on your iPhone,
iPod Touch, iPad and Android

These auctions feature
CHRISTIE'S LIVE
*Bid live in Christie's salerooms worldwide
register at christies.com*

CHRISTIE'S

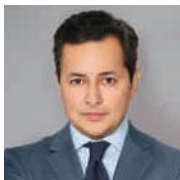
In addition to the hammer price, a Buyer's Premium (plus VAT) is payable. Other taxes and/or an Artist Resale Royalty fee are also payable if the lot has a tax or λ symbol. Check Section D of the Conditions of Sale at the back of this catalogue.

WORLDWIDE JEWELLERY DEPARTMENT

INTERNATIONAL TEAM



FRANÇOIS CURRIEL
Chairman, Europe
fcuriel@christies.com
+33 1 40 76 84 00



RAHUL KADAKIA
*International Head
of Jewellery*
rkadakia@christies.com
+1 212 636 2310



VICKIE SEK
Chairman, Jewellery, Asia
vsek@christies.com
+852 297 89922



JULIEN BRUNIE
*International Head,
Private sales, Jewellery*
jbrunie@christies.com
+33 1 40 76 83 82

AMERICAS



ANGELINA CHEN
Senior Specialist, New York
achen@christies.com
+1 212 636 2303



**ALEXANDRA
DAMIANOS**
Junior Specialist, New York
adamianos@christies.com
+1 212 636 2308



JACQUELINE DISANTE
*Associate Specialist,
New York*
jdisante@christies.com
+1 212 636 2316



CAROLINE ERVIN
Specialist, New York
cervin@christies.com
+1 212 636 2307



PEGGY GOTTLIEB
Specialist, Los Angeles
pgottlieb@christies.com
+1 310 385 2665



LISA HUBBARD
Senior Advisor, Los Angeles
lhubbard@christies.com
+1 310 385 2624



EDWARD KLOPFER
*Associate Specialist,
New York*
eklopf@christies.com
+1 212 636 2318



DAPHNE LINGON
*Head of Jewelry
Department, Americas*
dlington@christies.com
+1 212 636 2309



**CLAIBOURNE
POINDEXTER**
Specialist, New York
cpoindexter@christies.com
+1 212 636 2316

ASIA



KAREN AU YEUNG
*Senior International
Specialist, Hong Kong*
kau-yeung@christies.com
+852 2978 9921



FUNG CHIANG
*Senior Specialist,
Hong Kong*
fchiang@christies.com
+852 2978 9977



RONNY HSU
Specialist, Hong Kong
rhsu@christies.com
+852 2978 6979



CAROLINE LIANG
Specialist, Shanghai
cliang@christies.com
+86 212 226 1520



CONNIE LUK
*Associate Specialist,
Hong Kong*
cluk@christies.com
+852 2978 9928

COPYRIGHT NOTICE

No part of this catalogue may be reproduced, stored in a retrieval system or transmitted by any form or by any means, electronic, mechanical, photocopying, recording or otherwise, without the prior written permission of Christie's.

© COPYRIGHT, CHRISTIE, MANSON & WOODS LTD. (2020)

EUROPE, MIDDLE EAST, RUSSIA AND INDIA



HENRY BAILEY
Specialist, London
hbailey@christies.com
+44 20 7389 2382



ANGELA BERDEN
Senior Specialist, Geneva
aberden@christies.com
+41 22 319 17 82



LUKAS BIEHLER
Jewellery Liaison, Munich
lbiehler@christies.com
+49 89 2420 9680



MAFALDA CHENU
Associate Specialist, Paris
mchenu@christies.com
+33 1 40 76 72 59



MARIE-CECILE CISAMOLO
Associate Specialist, Geneva
mccisamolo@christies.com
+41 22 319 17 61



LEO CRIACO
Specialist, Geneva
lcriaco@christies.com
+41 22 319 17 44



VIOLAINE D'ASTORG
Head of Department, Paris
vdastorg@christies.com
+33 1 40 76 85 81



JESSICA ELLIOTT
Specialist, London
jelliott@christies.com
+44 20 7389 2172



MAX FAWCETT
Head of Department, Geneva
mfawcett@christies.com
+41 22 319 17 38



MEI Y GIAM
Private Sales Director, London
mgiam@christies.com
+44 20 7389 5104



JESSICA KOERS
Head of Department, Amsterdam
jkoers@christies.com
+31 20 575 5915



JEAN-MARC LUNEL
Senior International Specialist, Geneva
jlunel@christies.com
+41 22 319 17 37



KEITH PENTON
Head of Department, London
kpenton@christies.com
+44 20 7389 2526



RAYMOND SANCROFT-BAKER
Consultant, London
rsancroft-baker@christiespartners.com
+44 20 7389 2388



FREDERIK SCHWARZ
Consultant, Berlin
fschwarz@christiespartners.com
+49 175 524 4379



MICHAELA SUHL
Junior Specialist, London
msuhl@christies.com
+44 20 7389 2860



DAVID WARREN
Senior International Director, London
dwarren@christies.com
+44 20 7389 2380

SPECIALISTS & SERVICES FOR THIS AUCTION

SPECIALISTS

Keith Penton, F.G.A., D.G.A.
Head of Department
Henry Bailey, G.G.
Specialist

Michaela Suhl, G.G.
Junior Specialist

Tel: +44 (0)20 7389 2172
Fax: +44 (0)20 7389 2311

CONSULTANT

Raymond Sancroft-Baker, F.G.A.

GLOBAL MANAGING DIRECTOR, LUXURY

Aline Sylla-Walbaum
Tel: +44 (0)20 7389 2554

HEAD OF SALE MANAGEMENT

Saara Thomas, F.G.A.
Tel: +44 (0)20 7389 2383

BUSINESS MANAGER

Virginie Dulucq
Tel: +44 (0)20 7389 2853

AUCTION RESULTS

Tel: +44 (0)20 7839 9060
christies.com

christies.com

SERVICES

POST-SALE SERVICES

Zoe Verlinden
Post-Sale Coordinator
Payment, Shipping, and Collection
Tel: +44 (0)20 7752 3200
Fax: +44 (0)20 7752 3300
Email: PostSaleUK@christies.com

ABSENTEE AND TELEPHONE BIDS

Tel: +44 (0)20 7389 2658
Fax: +44 (0)20 7930 8870

CLIENT SERVICES

Tel: +44 (0)20 7839 9060
Fax: +44 (0)20 7389 2869
Email: info@christies.com

EMAIL

For general enquiries about this auction, emails should be addressed to Head of Sale Management.



1

Ω1

DIAMOND EARRINGS, VAN CLEEF & ARPELS

Circular-cut diamonds, French marks, 3.2 cm, signed VCA for Van Cleef & Arpels, no. 46691

£3,000-5,000

US\$3,800-6,300
€3,400-5,600

THE PROPERTY OF A LADY OF TITLE

2

GOLD AND CARNELIAN 'ALHAMBRA' LONGCHAIN NECKLACE, VAN CLEEF & ARPELS

Twenty carnelian panels, gold (French, Swiss and European Convention marks), 86.0 cm, signed VCA for Van Cleef & Arpels, no. JA537933, S810, green Van Cleef & Arpels pouch

£6,000-8,000

US\$7,500-10,000
€6,700-8,900

2



3

VARIOUS PROPERTIES

Ω3

COLOURED DIAMOND RING

Fancy Brown-Yellow round rose-cut diamond of 5.02 carats, circular-cut diamonds of brown-yellow tint, ring size M

GIA, 2016, report no. 1176794303: 5.02 carats, Fancy Brown-Yellow colour, I1 clarity

Please note the remaining coloured diamonds have not been tested for natural colour.

£15,000-20,000

US\$19,000-25,000

€17,000-22,000

4

DIAMOND, LETTERWOOD AND LACQUER 'KIKUMAKIE' BUTTERFLY BROOCH, VAN CLEEF & ARPELS

Circular-cut diamonds, French marks, 4.8 cm, signed VCA, Junichi Hakose maker's mark to the reverse, no. CL 21164, green Van Cleef & Arpels case with engraved plaque 'Kikumakie', Numbered Limited Edition B-14/20

£15,000-20,000

US\$19,000-25,000

€17,000-22,000



4



5

THE PROPERTY OF A LADY OF TITLE

•5

DIAMOND 'SERPENT BOHÈME' BRACELET, BOUCHERON

Circular-cut diamonds, 19.0 cm, signed Boucheron, no. N73810

£3,000-5,000

US\$3,800-6,200

€3,400-5,500

In addition to the hammer price, a Buyer's Premium (plus VAT) is payable. Other taxes and/or an Artist Resale Royalty fee are also payable if the lot has a tax or λ symbol. Check Section D of the Conditions of Sale at the back of this catalogue.



6



7

•6

COIN AND DIAMOND 'MONETE' NECKLACE, BULGARI

Two coins, circular-cut diamonds, 44.0 cm, signed Bulgari

£3,000-5,000

US\$3,800-6,200

€3,400-5,500

7

DIAMOND 'B.ZERO 1' BANGLE, BULGARI

Circular-cut diamonds, inner circumference 16.0 cm, signed Bulgari, no. FAS9L3, black Bulgari case

£8,000-12,000

US\$10,000-15,000

€8,900-13,000



8



9

VARIOUS PROPERTIES

8

DIAMOND 'SERPENTI' SUITE, BULGARI

Circular-cut diamonds, sprung, bangle inner circumference 12.0 cm, ring size M, earrings 2.1 cm, signed Bulgari, bangle no. C4WSLL, ring no. EMSTWW, earrings no. HWN75H

£12,000-15,000

US\$16,000-19,000
€14,000-17,000

THE PROPERTY OF A LADY OF TITLE

•9

DIAMOND-SET CHOKER

Gaspipe design, circular-cut diamonds, 35.5 cm

£800-1,200

US\$1,000-1,500
€890-1,300



VARIOUS PROPERTIES

~Ω10

GROUP OF MULTI-GEM SET JEWELLERY

Comprising an anchor-link necklace, 84.5 cm, 106 gr.; a textured hoop-link bracelet, French marks, 21.5 cm, 95 gr., signed Mauboussin Paris, no. 10258; an engine-turned pill box, French marks, 4.3x2.9x1.1 cm, 29 gr., signed Van Cleef & Arpels, no. 9881, black Van Cleef & Arpels pouch; a ring: rough diamond, circular-cut diamonds and coloured diamonds, ring size F½; and interlocking rings: cabochon amethyst and coral, ring sizes H

Please note the coloured diamonds have not been tested for natural colour.

£4,000-6,000

US\$5,100-7,600

€4,500-6,700



11

MOTHER-OF-PEARL 'ALHAMBRA' NECKLACE AND BRACELET SET, VAN CLEEF & ARPELS

Mother-of-pearl plaques, French marks, necklace 40.0 cm, bracelet 17.5cm, necklace and bracelet signed VCA for Van Cleef & Arpels, necklace no.BL207732, bracelet no. BL195309, green Van Cleef & Arpels pouch and box

£6,000-8,000

US\$7,600-10,000

€6,700-8,900

Please note that this lot will be subject to US Fish & Wildlife regulations if it is imported into the USA.





12

13

12

**AMETHYST AND DIAMOND NECKLACE AND BRACELET SET,
BULGARI**

Amethyst and polished beads, circular-cut diamonds, necklace 46.5 cm,
bracelet 21.2 cm, signed Bulgari, necklace no. AC9S6T, bracelet no. AE5HS7

£10,000-15,000

US\$13,000-19,000

€12,000-17,000

13

DIAMOND RING

Rectangular cut-cornered diamond of 3.81 carats, ring size K, makers mark 'gh'
for Georg Hornemann

£12,000-15,000

US\$15,000-19,000

€14,000-17,000

12

In addition to the hammer price, a Buyer's Premium (plus VAT) is payable. Other taxes and/or an Artist Resale Royalty fee are also payable if the lot has a tax or λ symbol. Check Section D of the Conditions of Sale at the back of this catalogue.



14

15

THE PROPERTY OF A LADY OF TITLE

14

GOLD AND MALACHITE 'ALHAMBRA' LONGCHAIN NECKLACE, VAN CLEEF & ARPELS

Twenty malachite panels, gold (French, Swiss and European Convention marks), 86.0 cm, signed VCA for Van Cleef and Arpels, no. JE376611, green Van Cleef & Arpels pouch

£6,000-8,000

US\$7,500-10,000
€6,700-8,900

VARIOUS PROPERTIES

Ω15

GOLD, EMERALD, ENAMEL AND DIAMOND BANGLE, KUTCHINSKY

Circular cabochon emeralds, black enamel, circular-cut diamonds, gold (London hallmarks), 1972, inner circumference 15.5 cm, signed Kutchinsky, maker's mark

£5,000-7,000

US\$6,300-8,700
€5,600-7,700



16

16
MABÉ PEARL, AMETHYST AND DIAMOND PENDANT
NECKLACE

Cultured mabé pearl, oval-cut amethysts, circular and pear-shaped diamonds, pendant with brooch fitting, 6.3 cm, three necklaces, 35.5 cm to 41.0 cm

£3,000-5,000

US\$3,800-6,200
 €3,300-5,500



17

17
CULTURED PEARL AND DIAMOND EARRINGS

Cultured pearls, circular-cut diamonds, 4.3 cm, red Annabel Jones case

£2,500-3,500

US\$3,200-4,400
 €2,800-3,900

18

PINK SAPPHIRE AND DIAMOND RING

Oval-cut pink sapphire of approximately 6.80 carats, baguette and single-cut diamonds, ring size O½

SSEF, 2019, report no. 104131: approximately 6.8 carats, Ceylon (Sri Lanka), no indication of heating, minor amount of oil in fissures

£20,000-25,000

US\$25,000-31,000

€23,000-28,000



18



(side view)

THE PROPERTY OF A LADY

19

DIAMOND RING

Circular-cut diamond of 3.67 carats, ring size P½

£10,000-15,000

US\$13,000-19,000

€12,000-17,000



19

THE PROPERTY OF A LADY OF TITLE

•20

**STEEL AND DIAMOND 'STIRRUP' WRISTWATCH,
RALPH LAUREN**

Circular-cut diamonds, case 2.3 cm, signed Ralph Lauren, no. K00401
WAGH04019, black Ralph Lauren case

£500-700

US\$630-880

€560-780



20



21

VARIOUS PROPERTIES

21

CULTURED PEARL AND DIAMOND NECKLACE AND BRACELET SET, RETAILED BY ANNABEL JONES

Cultured pearls and circular-cut diamonds, gold (UK hallmarks), 1997, necklace 55.0 cm, bracelet 27.0 cm, necklace with 'AJA' maker's mark for Annabel Jones, turquoise Annabel Jones case

£5,000-8,000

US\$6,300-10,000
€5,600-8,900



22

GOLD AND DIAMOND PENDANT NECKLACE, DE GRISOGONO

Circular-cut diamonds, gold (French and European Convention marks), 42.5 cm, pendant 6.5 cm, signed de Grisogono, maker's mark, numbered, black de Grisogono case

£3,000-5,000

US\$3,800-6,300
€3,400-5,600



22



23

23

GOLD AND DIAMOND EARRINGS, DE GRISOGONO

Circular-cut diamonds, gold (French and European Convention marks), 6.5 cm, signed de Grisogono, maker's marks, numbered, black de Grisogono case

£8,000-12,000

US\$11,000-15,000
€8,900-13,000

Ω24

COLOURED DIAMOND AND DIAMOND RING

Fancy Yellow-Brown pear brilliant-cut diamond of 10.58 carats, circular-cut diamonds, ring size O

Previously accompanied by GIA report no. 2183959038 (no longer extant)

£8,000-15,000

US\$10,000-19,000
€8,900-17,000



24

25

DIAMOND PENDANT

Rectangular-cut diamond of 9.14 carats

Please see condition report for certificate details.

£45,000-65,000

US\$57,000-81,000

€50,000-72,000



25
(unmounted)

THE PROPERTY OF A LADY OF TITLE

•26

DIAMOND-SET 'OYSTER PERPETUAL DATEJUST' WRISTWATCH, ROLEX

Circular-cut diamonds, stainless steel, case 3.0 cm, signed Rolex, green Rolex box

£1,500-2,500

US\$1,900-3,100

€1,700-2,800



26



27

VARIOUS PROPERTIES

†27

GOLD AND COLOURED DIAMOND 'GRAFFITI' BANGLE, GRAFF

Circular-cut pink diamonds, gold (European Convention and London hallmarks), inner circumference 16.0 cm, signed Graff, no. 2779, blue Graff case

Graff: Certificate of Quality

Please note that the coloured diamonds have not been tested for natural colour origin.

£13,000-16,000

US\$17,000-20,000

€15,000-18,000



28

†28

SAPPHIRE, CHALCEDONY AND DIAMOND CUFFLINKS, MARGHERITA BURGNER

Circular-cut sapphires, cabochon chalcedony, circular-cut diamonds, signed Margherita Burgener, grey Margherita Burgener case

£2,000-3,000

US\$2,600-3,800

€2,300-3,300



29

THE PROPERTY OF A LADY OF TITLE

•29

DIAMOND-SET 'OYSTER PERPETUAL DATEJUST' WRISTWATCH, ROLEX

Circular-cut diamonds, stainless steel, case 3.0 cm, signed Rolex, green Rolex box

£1,500-2,500

US\$1,900-3,100

€1,700-2,800



30



31

VARIOUS PROPERTIES

Ω30

CULTURED PEARL AND DIAMOND NECKLACE

Cultured pearls, faceted diamond beads, 158.0 cm

£7,000-8,000

US\$8,800-10,000

€7,800-8,900

31

DIAMOND EARRINGS

Circular, square and marquise-cut diamonds, 7.0 cm

£4,000-6,000

US\$5,100-7,500

€4,500-6,700



32



33

THE PROPERTY OF A PRIVATE COLLECTOR

Ω32

SAPPHIRE DRESS SET

Circular cabochon sapphires, cufflinks 1.9 cm, studs 1.1 cm

£6,000-8,000

US\$7,600-10,000

€6,700-8,900

VARIOUS PROPERTIES

33

SAPPHIRE AND DIAMOND BRACELET

Baguette and calibré-cut sapphires, baguette and circular-cut diamonds, 18.4 cm

£5,000-7,000

US\$6,300-8,700

€5,600-7,700



34

34

SAPPHIRE AND DIAMOND DRESS SET

Calibré-cut sapphires, circular-cut diamonds, cufflinks 2.1 cm, studs 1.2 cm

£5,000-7,000

US\$6,300-8,800

€5,600-7,800



35



37



36

35

CULTURED PEARL AND DIAMOND EARRINGS AND DIAMOND PENDANT

Cultured pearls, circular, square and marquise-cut diamonds, earrings 8.8 cm, drops detachable, pendant 6.4 cm

£4,000-6,000

US\$5,100-7,500

€4,500-6,700

FORMERLY THE PROPERTY OF GRAND DUCHESS
ALEXANDRA OF MECKLENBURG-SCHWERIN

•36

DIAMOND BRACELET

Old and circular-cut diamonds, 18.0 cm

£2,000-3,000

US\$2,500-3,700

€2,300-3,300

VARIOUS PROPERTIES

37

GOLD, SAPPHIRE AND DIAMOND EARRINGS

Oval-cut sapphires, circular-cut diamonds, gold (London hallmarks), 7.4 cm

£5,000-7,000

US\$6,300-8,800

€5,600-7,800



38

38

DIAMOND NECKLACE

Pear-shaped, circular, oval and marquise-cut diamonds, 42.5 cm

£25,000-35,000

US\$32,000-43,000

€28,000-39,000



39

THE PROPERTY OF A LADY OF TITLE

•39

**GOLD AND DIAMOND 'RENDEZ-VOUS NIGHT & DAY'
WRISTWATCH, JAEGER-LECOULTRE**

Circular-cut diamonds, gold (European Convention marks), mechanical movement, case 2.8 cm, signed Jaeger-LeCoultre, numbered, brown suede Jaeger-LeCoultre case and white box

£4,000-6,000

US\$5,100-7,500
€4,500-6,700



40

•40

**GOLD, DIAMOND AND BLACK LACQUER 'PREMIÈRE CHAÎNE'
WRISTWATCH, CHANEL**

Circular-cut diamonds, black lacquer dial, cabochon onyx crown, gold (European Convention marks), quartz movement, case 1.6 cm, signed Chanel, no. C.X.H 33369, black Chanel pouch

£1,500-2,500

US\$1,900-3,200
€1,700-2,800



41



42

VARIOUS PROPERTIES

41

SAPPHIRE AND DIAMOND NECKLACE, BULGARI

Cabochon sapphire, baguette-cut diamonds, 40.0 cm, signed Bulgari

£8,000-12,000

US\$10,000-15,000

€8,900-13,000

42

COLOURED DIAMOND EARRINGS

Fancy Light Yellow rectangular-cut diamonds of 4.06 and 4.00 carats

GIA, 2018, report 1192496221: 4.06 carats, Fancy Light Yellow colour, VVS2 clarity

GIA, 2018, report 5192098833: 4.00 carats, Fancy Light Yellow colour, VVS1 clarity

£35,000-45,000

US\$44,000-56,000

€39,000-50,000

In addition to the hammer price, a Buyer's Premium (plus VAT) is payable. Other taxes and/or an Artist Resale Royalty fee are also payable if the lot has a tax or λ symbol. Check Section D of the Conditions of Sale at the back of this catalogue.



43

DIAMOND SUITE, BUCCELLATI

Circular-cut diamonds, two bangles inner circumference 16.0 cm, earrings 1.5 cm, ring size L, signed Buccellati, bangles nos. R5987 and L3877, earrings L5237, ring no. L6298

£8,000-12,000

US\$11,000-15,000

€8,900-13,000



44

SAPPHIRE BANGLE AND TWO GEM-SET RINGS, BUCCELLATI

Circular-cut sapphires and emeralds, bangle inner circumference 16.0 cm, sapphire ring size L½, emerald ring K½, signed Buccellati, bangle no. L5209, sapphire ring no. L33343 (indistinct), emerald ring no. L3007

£5,000-7,000

US\$6,300-8,800

€5,600-7,800



45

THE PROPERTY OF A LADY OF TITLE

45

**GOLD AND MOTHER-OF-PEARL 'ALHAMBRA' LONGCHAIN
NECKLACE, VAN CLEEF & ARPELS**

Twenty mother-of-pearl panels, gold (French, Swiss and European Convention marks), 86.8 cm, signed VCA for Van Cleef & Arpels, no. JA331634, R0233, green Van Cleef & Arpels pouch

£6,000-8,000

US\$7,600-10,000
€6,700-8,900

Please note that this lot will be subject to US Fish & Wildlife regulations if it is to be imported into the USA



46
(illustrated reduced)



47

THE PROPERTY OF A SPANISH FAMILY

46

GOLD MINAUDIÈRE, VAN CLEEF & ARPELS

Engine turned, French marks, opening to reveal a bevelled mirror, a compact with single-cut diamond accents, glass covered compartment, lighter, two covered compartments, lipstick holder, pill box and comb, 1950s, 11.9x15.1x2.1 cm, 891 gr, signed La Minaudière de Van Cleef & Arpels, maker's mark, no. 60944, camel Van Cleef & Arpels case

£10,000-15,000

US\$13,000-19,000
€12,000-17,000

VARIOUS PROPERTIES

47

DIAMOND RING

Circular-cut diamond, ring size Q

£20,000-25,000

US\$25,000-31,000
€23,000-28,000

THE PROPERTY OF A LADY OF TITLE

48

**RUBY AND DIAMOND PENDANT/BROOCH,
VAN CLEEF & ARPELS**

Ruby cabochons, circular-cut diamonds, French marks, circa 1970, 7.3 cm,
signed Van Cleef & Arpels, no. 24296, Van Cleef & Arpels suede case

Gem & Pearl Laboratory, 2020, report no 18540: natural rubies, no evidence of
heat treatment

£8,000-12,000

US\$10,000-15,000
€8,900-13,000



48



49

THE PROPERTY OF A PRIVATE COLLECTOR

Ω49

DIAMOND DRESS SET, SCHLUMBERGER FOR TIFFANY & CO

Circular-cut diamonds, cufflinks 1.8 cm, three studs 1.1 cm, signed
Schlumberger and Tiffany

£3,200-5,000

US\$4,100-6,300
€3,600-5,600

***50**

**EARLY 20TH CENTURY RUBY AND DIAMOND CUFFLINKS,
TIFFANY & CO.**

Oval cabochon rubies, old-cut diamonds, circa 1910, panels 2.3 cm, signed
Tiffany & Co.

£5,000-7,000

US\$6,400-8,800
€5,600-7,800



50



51
(illustrated reduced)

VARIOUS PROPERTIES

51

DIAMOND-SET EVENING BAG AND MATCHING ACCESSORIES

Bicoloured woven design, circular-cut diamonds, opening to reveal fitted mirror, lipstick holder, two compacts and a comb, 1960s, bag 19.6x9.6x4.8 cm, 434 gr, compact 6.8x9.3x1.7 cm, 99 gr, powder compact with mirror, 5.8x8.4x1.9 cm, 157 gr, lipstick holder 5.8x1.8x1.6 cm, 25 gr, comb 10.7x2.5x0.3 cm, 13 gr

£10,000-15,000

US\$13,000-19,000
€12,000-17,000

THE PROPERTY OF A PRIVATE COLLECTOR

Ω52

COMPACT BOX, CHAUMET

Bicoloured basket-weave design, monogram with coronet surmount applied to the lid, circa 1960, French marks, 9.0x4.6x1.1 cm, 75.0 gr., signed Chaumet, no. 0181

£2,000-4,000

US\$2,500-5,000
€2,300-4,400



52



53



54

THE PROPERTY OF A SPANISH FAMILY

53

CITRINE, RUBY AND DIAMOND BROOCH

Rectangular-cut citrine, circular-cut rubies and diamonds, 5.7 cm

£2,000-3,000

US\$2,500-3,700

€2,300-3,300

VARIOUS PROPERTIES

54

'CHEVEUX D'ANGE' BRACELET, VAN CLEEF & ARPELS

Curbed wire links, 1960s, 19.9 cm, signed VCA for Van Cleef & Arpels, maker's mark for Georges Lenfant, no. 2V102

£10,000-15,000

US\$13,000-19,000

€12,000-17,000



55

GOLD AND DIAMOND SUITE, ASPREY

Circular and baguette-cut diamonds, gold (London import marks), 1996 and 1997, necklace 39.0 cm, earrings 2.7 cm, ring size L, signed APLC for Asprey; with associated bracelet, inner circumference 15.1 cm

£12,000-18,000

US\$16,000-23,000

€14,000-20,000



THE PROPERTY OF A LADY OF TITLE

56

**GOLD AND TIGER'S-EYE 'ALHAMBRA' LONGCHAIN NECKLACE,
VAN CLEEF & ARPELS**

Twenty tiger's-eye panels, gold (French, Swiss and European Convention marks), 86.8 cm, signed VCA for Van Cleef & Arpels, no. JA329405, R0231, green Van Cleef & Arpels pouch

£6,000-8,000

US\$7,500-10,000
€6,700-8,900



57



•57

CULTURED PEARL, RUBY AND DIAMOND NECKLACE, PENDANT AND EARRINGS

Cultured pearls, cabochon and circular-cut rubies, rose and flat-cut diamonds, necklace 43.0 cm, pendant 9.0 cm, earrings 3.0 cm

£3,000-5,000

US\$3,800-6,300
€3,400-5,600



58



59

VARIOUS PROPERTIES

58

INDIAN RUBY AND DIAMOND EARRINGS

Flat-cut diamonds, faceted ruby beads, closed-set, white, red, green and light blue enamel to the reverse, 6.1 cm

£3,000-5,000

US\$3,800-6,300
€3,400-5,600

THE PROPERTY OF A LADY OF TITLE

•59

INDIAN DIAMOND AND PEARL BRACELET

Flat-cut diamonds and cultured pearls, red, blue and green enamel to the reverse, 16.0 cm

£2,000-3,000

US\$2,500-3,700
€2,300-3,300



60

THE PROPERTY OF A LADY

60

18TH CENTURY 'MINAS NOVAS' TOPAZ AND BERYL PENDANT AND EARRINGS

Of girandole form, circular-cut and pear-shaped colourless beryl, light pink topaz, heliodor and green beryl, closed-set in silver, circa 1760, pendant 6.3 cm, earrings 4.6 cm, original tooled leather fitted case

£8,000-12,000

US\$11,000-15,000

€8,900-13,000

VARIOUS PROPERTIES

61

ANTIQUE DIAMOND DOUBLE HEADED EAGLE BROOCH

Possibly Russian, rose, single and table-cut diamonds, silver and gold, late 19th century, 6.7 cm

£3,000-5,000

US\$3,800-6,200

€3,400-5,500



61



THE PROPERTY OF A LADY

62

19TH CENTURY DIAMOND NECKLACE AND EARRINGS

Old-cut diamonds, silver and gold, earrings later converted from necklace panels, circa 1870, necklace 36.2 cm, earrings 2.7 cm

£8,000-12,000

US\$11,000-15,000

€8,900-13,000



63

64

THE PROPERTY OF A LADY

63

LATE 19TH CENTURY DIAMOND CORSAGE ORNAMENT

Old and rose-cut diamonds, silver and gold (Portuguese marks), mounted *en tremblant*, divides into three, circa 1880, maximum length 22.0 cm, later fitted case

£7,000-9,000

US\$8,800-11,000
€7,800-10,000

THE PROPERTY OF A PRIVATE COLLECTOR

***64**

LATE 19TH CENTURY DIAMOND EARRINGS

Old-cut diamonds, silver and gold, circa 1890, associated drops detachable, 4.0 cm

£6,000-8,000

US\$7,600-10,000
€6,700-8,900



THE PROPERTY OF A LADY

65

LATE 19TH CENTURY DIAMOND RIVIÈRE NECKLACE

Old-cut diamonds, silver and gold, circa 1890, 45.0 cm, fitted tooled leather case

£15,000-20,000

US\$19,000-25,000

€17,000-22,000

VARIOUS PROPERTIES

66

LATE 19TH CENTURY DIAMOND AND RUBY BUTTERFLY BROOCH

Old circular and single-cut diamonds, cabochon rubies, silver and gold, mounted *en tremblant*, circa 1880, 4.9 cm, brown fitted case

£6,000-8,000

US\$7,500-9,900

€6,700-8,800

65



66



67

67

LATE 19TH CENTURY NATURAL PEARL AND DIAMOND NECKLACE

Seventy-seven natural pearls of approximately 6.5 to 4.2 mm, old-cut diamonds, silver and gold, brooch fitting, circa 1890, 49.0 cm, original blue Garrard case

Gem & Pearl Laboratory, 2020, report no. 18334: natural pearls (saltwater)

£7,000-9,000

US\$8,700-11,000

€7,800-9,900



68

68

ANTIQUE PEARL AND DIAMOND PENDANT

Heart-shaped baroque pearl, rose-cut diamonds, closed-back settings, silver and gold, circa 1820, adapted, 4.4 cm

Please note that the pearl has not been tested for natural origin.

£3,000-5,000

US\$3,800-6,200

€3,400-5,500

THE PROPERTY OF A PRIVATE COLLECTOR

***69**

**19TH CENTURY SAPPHIRE AND DIAMOND GIRANDOLE
BROOCH**

Rectangular and octagonal-cut sapphires, old, cushion, single and rose-cut
diamonds, circa 1830, 7.3 cm

£18,000-25,000

US\$23,000-31,000

€20,000-28,000



69

VARIOUS PROPERTIES

70

**LATE 19TH CENTURY GOLD, SAPPHIRE, DIAMOND AND AGATE
SCENT BOTTLE**

Cabochon sapphire, rose-cut diamonds, carved agate, French marks, circa
1890, 8.0 cm

£2,000-3,000

US\$2,500-3,700

€2,300-3,300



70



71

THE PROPERTY OF A LADY OF TITLE

•71

DIAMOND AND PEARL PENDANT NECKLACE

Rose and circular-cut diamonds, foil-backed, natural and cultured pearls, detachable brooch/pendant, necklace, 77.0 cm, pendant 11.0 cm

Gem & Pearl Laboratory, 2020, report no. 18481: natural saltwater pearls and two bead-nucleated cultured pearls

£8,000-12,000

US\$10,000-15,000

€8,900-13,000



72

•72

COLOURED DIAMOND AND DIAMOND EARRINGS, RETAILED BY AMRAPALI

Circular-cut black diamonds, flat and circular-cut diamonds, gold (London hallmarks), 2012, 7.0 cm

Please note that the remaining coloured diamonds have not been tested for natural colour.

£3,000-5,000

US\$3,800-6,300

€3,400-5,600



73

73

DIAMOND NECKLACE AND EARRINGS SET

Flat vari, rose and single-cut diamonds, closed-back, necklace 64.5 cm,
earrings 2.3 cm

£15,000-20,000

US\$19,000-25,000

€17,000-22,000



74



75

VARIOUS PROPERTIES

Ω74

COMPACT BOX, BUCCELLATI

Chiselled finish, hinged lid, inside engraved with floral decorations, 1950s, 7.7x5.4x1.5 cm, 101 gr., signed M. Buccellati

£1,500-2,000

US\$1,900-2,500
€1,700-2,200

75

RETRO DIAMOND COCKTAIL RING

Circular rose-cut diamond, circa 1940, ring size M

£6,000-8,000

US\$7,500-10,000
€6,700-8,900



76



77

THE PROPERTY OF A LADY OF TITLE

76

RUBY AND DIAMOND NECKLACE, RETAILED BY AMRAPALI

Oval-cut rubies, foil-backed marquise-shaped rose-cut and circular-cut diamonds, 74.0 cm, detachable to wear as a bracelet and necklace, bracelet link 19.5 cm

Gem & Pearl Laboratory, 2020, report no. 18480: natural rubies, evidence of heat treatment

£15,000-20,000

US\$19,000-25,000
€17,000-22,000

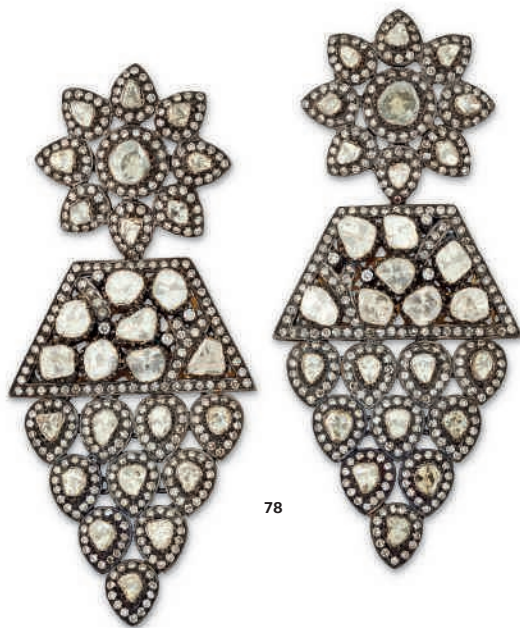
77

DIAMOND EARRINGS

Rose and circular-cut diamonds, closed-back, 3.4 cm

£1,000-1,500

US\$1,300-1,900
€1,200-1,700



78

•78

DIAMOND EARRINGS, RETAILED BY AMRAPALI

Flat and circular-cut diamonds, open and closed-back, 7.5 cm

£3,000-5,000

US\$3,800-6,300

€3,400-5,600



79

•79

DIAMOND EARRINGS, RETAILED BY AMRAPALI

Flat and circular-cut diamonds, 5.5 cm

£2,000-3,000

US\$2,600-3,800

€2,300-3,300



•80

**EMERALD AND DIAMOND NECKLACE AND BRACELET SET,
RETAILED BY AMRAPALI**

Emerald beads, flat and circular-cut diamonds, closed-back, cord backchain,
fringe section 44.0 cm, bracelet 16.0 cm

£15,000-20,000

US\$19,000-25,000

€17,000-22,000

80





81

VARIOUS PROPERTIES

81

NEO-RENAISSANCE EMERALD AND GEM-SET NECKLACE

Cushion shaped emeralds, the central emerald of 14.28 carats, point, old and table-cut diamonds, bouton shaped pearls, vari-coloured enamel, circa 1880, 43.2 cm

£15,000-20,000

US\$19,000-25,000

€17,000-22,000

Please note that the pearls have not been tested for natural origin



82

82

LATE 19TH CENTURY EMERALD AND AMETHYST TIARA

Cabochon and flat-cut emeralds, pear-shaped amethysts, closed-back, silver and gold, circa 1890, velvet covered tiara frame, 3.8 cm high, purple fitted case by Mrs Newman, Goldsmith & Court Jeweller 58 Duke St Grosvenor Sq, W1

£8,000-12,000

US\$10,000-15,000

€8,900-13,000

Charlotte Isabella Newman (1836-1920), usually known as Mrs Philip Newman is widely regarded as the first important female studio jeweller. She began working for the influential antiquarian jeweller John Brogden in the 1860s and was active in London for the last four decades of the 19th century. A skilled goldsmith, trained in the art of granulation, she produced jewels in a range of ancient styles, from Byzantine to Renaissance revival and exhibited alongside Brogden at the Paris International Exhibitions in 1867, winning a medal of honour in 1878. In the mid-1880s after Brogden's death, she established her own business at 10 Savile Row, producing the latest aesthetic fashions in jewellery design and describing herself as 'Mrs. Newman, Goldsmith and Court Jeweller'.

The business later moved to Duke Street and was taken over by her daughter and granddaughter, eventually closing on the eve of World War II.

During the 1870s a small but influential group of aesthetes began to criticise the conventional jewellery designs of the period and the reliance on past historical styles and this led to a growing admiration for the art of the East and the decorative arts of Japan and India. Some commentators felt that modern jewellery had been ruined by the extensive use of mechanisation in the production process and there was also a growing artistic reaction against the supremacy of the diamond. After Queen Victoria became Empress of India in 1876, all things Indian, including jewellery began to appeal not only to the art critics who had first admired it, but to an even wider audience. The fact that this jewellery was entirely handmade with a lack of symmetry and precision appealed to those that advocated handcraftsmanship and the use of coloured gems cut in simple forms. This unusual tiara in the Indian taste is typical of the artistic jewels that Mrs Newman supplied to her select clientele from the late 19th century through to the first quarter of the 20th century.





83



84

83

**ANTIQUE DEMANTOID GARNET, DIAMOND AND RUBY
SALAMANDER BROOCH**

Cushion-shaped and circular-cut demantoid garnets, old circular and single-cut diamonds, cabochon rubies, silver and gold, circa 1900, 6.6 cm, green Garrard & Co Ltd fitted case

£6,000-8,000

US\$7,500-9,900
€6,700-8,800

THE PROPERTY OF A PRIVATE COLLECTOR

84

EARLY 20TH CENTURY RUBY AND DIAMOND CUFFLINKS

Circular cabochon rubies, circular-cut diamonds, circa 1920, panels 1.2 cm

£4,500-6,500

US\$5,700-8,100
€5,000-7,200



85



86

VARIOUS PROPERTIES

85

LATE 19TH CENTURY RUBY AND DIAMOND BUTTERFLY BROOCH

Oval and circular-cut rubies, old and single-cut diamonds, silver and gold, mounted *en tremblant*, circa 1880, 6.4 cm

£12,000-15,000

US\$15,000-19,000
€14,000-17,000

86

DIAMOND PENDANT

Elongated old cushion-cut diamond of 3.79 carats, old-cut diamonds, 2.9 cm

£6,500-8,500

US\$8,100-11,000
€7,200-9,400



87

87

SAPPHIRE AND DIAMOND EARRINGS

Briolette-cut sapphires, cushion-shaped and rose-cut diamonds, 4.5 cm, fitted case

£8,000-12,000

US\$11,000-15,000
€8,900-13,000



88

THE PROPERTY OF A LADY

88

EARLY 20TH CENTURY SAPPHIRE AND DIAMOND DRESS SET

Circular-cut and cushion-shaped sapphires, rose-cut diamonds, silver and gold (Lisbon marks), circa 1910, panels 1.1 cm, studs 0.6 cm, original fitted case

£5,000-7,000

US\$6,400-8,800
€5,600-7,800



89

VARIOUS PROPERTIES

Ω89

DIAMOND RING

Cushion brilliant-cut diamond of 4.59 carats, single-cut diamonds, ring size L½

GIA, 2019, report no. 6332311615: 4.59 carats, K (Faint Brown) colour, VVS2 clarity

£25,000-40,000

US\$31,000-49,000

€28,000-44,000





90



91

***90**

BELLE EPOQUE SAPPHIRE AND DIAMOND TIARA

Cabochon sapphire, rose and old-cut diamonds, circa 1910, 17.0 cm, blue fitted Sanz case

£15,000-25,000

US\$19,000-31,000
€17,000-28,000

91

ART DECO DIAMOND BRACELET AND EARLY 20TH CENTURY DIAMOND LINE BRACELET

Old-cut and single-cut diamonds, gold (French marks), 1920s, 18.2 cm; old-cut diamonds, gold (French marks), circa 1920, 18.3 cm

£5,000-8,000

US\$6,300-10,000
€5,600-8,900



92

92

**EARLY 20TH CENTURY DIAMOND BOW BROOCH,
SHREVE & CO.**

Old-cut diamonds, circa 1910, 7.8 cm, signed Shreve & Co.

£8,000-12,000

US\$10,000-15,000

€8,900-13,000

Founded in San Francisco during the 1850s by George and Samuel Shreve, Shreve & Co, as it became known, built up a reputation as one of the most prestigious jewellery and silverware firms outside of New York, and was especially popular amongst American society during the early part of the 20th Century.

93

ART DECO DIAMOND NECKLACE

Circular and single-cut diamonds, platinum (French marks), circa 1925,
detachable to form three bracelets, 77.2 cm, each bracelet 21.0 cm, additional
link 14.2 cm

£15,000-20,000

US\$19,000-25,000

€17,000-22,000

93





94

94

EARLY 20TH CENTURY SAPPHIRE AND DIAMOND RING

Cabochon sapphire of 2.80 carats, old circular and singular-cut diamonds, circa 1915, ring size M

AGL, 2019, report no. 1101647: 2.80 carats, Kashmir, no evidence of heat

SSEF, 2019, report no. 111081: 2.80 carats, Kashmir, no indications of heating

£30,000-40,000

US\$37,000-49,000

€33,000-44,000





95

95

MID-20TH CENTURY DIAMOND EARRINGS

Circular, baguette and single-cut diamonds, drops detachable, 1950s, 5.9 cm

£6,000-8,000

US\$7,600-10,000

€6,700-8,900



96

96

DIAMOND BRACELET

Circular, marquise, triangular, single and baguette-cut diamonds, French marks, 17.8 cm

£18,000-25,000

US\$23,000-31,000

€20,000-28,000



97

97

ART DECO SAPPHIRE AND ROCK CRYSTAL DRESS SET, RENÉ BOIVIN

Square-cut sapphires, rock crystal, French marks, circa 1935, cufflink panels 1.1 cm, studs 0.8 cm

Madame Françoise Cailles et Jean-Norbert Salit, 2020: Certificate of authenticity

£6,000-8,000

US\$7,500-10,000

€6,700-8,900



98



99

98

NATURAL PEARL, SEED PEARL AND DIAMOND NECKLACE

Sixty-six natural pearls of approximately 9.6-9.9 x 4.2 mm, sixty-five seed pearls, rose and old-cut diamonds, 44.5 cm

Gem & Pearl Laboratory, 2020, report no. 18478: natural pearls, saltwater

£13,000-17,000

US\$17,000-21,000

€15,000-19,000

THE PROPERTY OF A PRIVATE COLLECTOR

Ω99

SAPPHIRE AND DIAMOND BRACELET

Calibré-cut sapphires, marquise and circular-cut diamonds, 17.6 cm

£12,000-18,000

US\$15,000-22,000

€14,000-20,000



100

VARIOUS PROPERTIES

100

ART DECO NATURAL PEARL AND DIAMOND NECKLACE

One hundred eighty-nine graduated natural pearls of approximately 8.0-8.3 to 2.7 mm, circular and French-cut diamonds, circa 1920, 97.0 cm

Gem & Pearl Laboratory, 2019, report no. 18132: natural pearls, saltwater

£12,000-15,000

US\$15,000-19,000

€14,000-17,000

101

NATURAL PEARL BRACELET

Twenty-two natural pearls measuring 10.8-5.9 mm, two cultured pearls, 19.0 cm

Gem & Pearl Laboratory, 2020, report no. 18539: natural, saltwater; two bead-nucleated cultured pearls

£13,000-17,000

US\$17,000-21,000

€15,000-19,000



101



102

102

COLOURED NATURAL PEARL, NATURAL PEARL AND DIAMOND RING

Coloured natural pearl of approximately 10.8-11.0 x 8.2 mm, natural pearl of approximately 10.9-11.0 x 8.0 mm, circular, single and baguette-cut diamonds, French marks, ring size O½

GCS, 2019, report no. 80246-84: natural pearls, saltwater, no indications of treatment

£18,000-25,000

US\$23,000-31,000

€20,000-27,000



103



104



105

103

ART DECO DIAMOND BRACELET

Old, circular and single-cut diamonds, French marks, circa 1930, 18.8 cm

£5,000-7,000

US\$6,300-8,700

€5,600-7,700

104

DIAMOND BROOCH

Circular, single and baguette-cut diamonds, circa 1935, 6.1 cm

£2,500-3,500

US\$3,200-4,400

€2,800-3,900

•105

DIAMOND AND ONYX BRACELET

Old, circular and single-cut diamonds, onyx panels, 17.2 cm

£3,000-4,000

US\$3,800-5,000

€3,400-4,400



106



107

106

ROCK CRYSTAL, ENAMEL AND SEED PEARL TIMEPIECE, BOUCHERON

Frosted rock crystal, enamel, seed pearls, paste, silver and gold, circa 1900 and later, 12.3x8.9x4.2 cm, dial signed Boucheron, red fitted Boucheron case

£8,000-10,000

US\$11,000-13,000
€8,900-11,000

***107**

ART DECO ENAMEL AND GOLD VANITY CASE, LACLOCHE FRÈRES

Blue and black enamel, gold (UK Import and French marks), opening to reveal a mirror, a powder compartment and a lipstick holder, circa 1920, 7.0x4.7x1.0 cm, signed Lacloche Fres Paris, nos. 746856 and 9119, camel Lacloche Frères pouch

£5,000-7,000

US\$6,300-8,700
€5,600-7,700

***109**

ART DECO ENAMEL, NEPHRITE, CARNELIAN AND DIAMOND VANITY CASE, VAN CLEEF & ARPELS

Red and black enamel, carved nephrite, cabochon and carved carnelian, rose-cut diamonds, French marks, opening to reveal a mirror, a powder compartment and a lipstick holder, circa 1920, 7.7x4.5x0.8 cm, signed Van Cleef & Arpels, no. 28246

£8,000-12,000

US\$10,000-15,000
€8,900-13,000

110

ART DECO ONYX AND DIAMOND BRACELET

Calibré-cut onyx, old-cut diamonds, circa 1920, 18.2 cm

£8,000-10,000

US\$10,000-12,000
€8,900-11,000



108

ART DECO NATURAL PEARL AND DIAMOND NECKLACE

One hundred and seven natural pearls of approximately 7.9 to 3.2 mm, single, baguette and tapered baguette-cut diamonds, circa 1925, 49.7 cm, original maroon Goldsmiths & Silversmiths Company case

Gem & Pearl Laboratory, 2020, report no. 18333: natural pearls (saltwater)

£10,000-15,000

US\$13,000-19,000

€12,000-17,000

108



110



109



111

111

GOLD, EMERALD AND DIAMOND NECKLACE, GRAFF

Circular-cut and pear-shaped emeralds, circular-cut diamonds, gold (European Convention and London hallmarks), 42.0 cm, pendant 6.0 cm, signed Graff, no. GP17443, blue Graff case

Graff: Certificate of Quality

£12,000-15,000

US\$15,000-19,000

€14,000-17,000



112

112

GOLD, EMERALD AND DIAMOND EARRINGS

Pear-shaped cabochon emeralds, circular-cut diamonds, gold (London hallmarks), 8.2 cm

£6,000-8,000

US\$7,600-10,000

€6,700-8,900



113

113

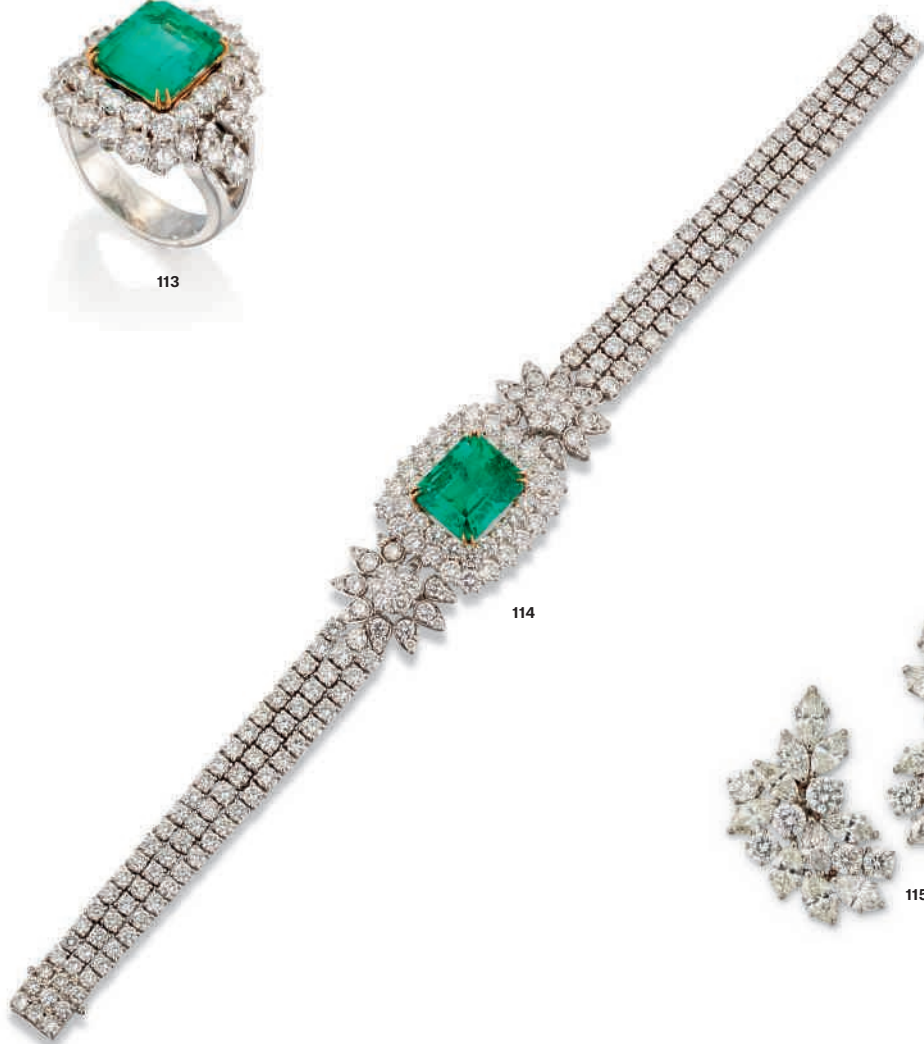
EMERALD AND DIAMOND RING

Rectangular step-cut emerald, circular-cut diamonds, ring size N

£8,000-12,000

US\$10,000-15,000

€8,900-13,000



114

114

EMERALD AND DIAMOND BRACELET

Rectangular-cut emerald, circular-cut diamonds, 18.0 cm

£12,000-18,000

US\$15,000-22,000

€14,000-20,000



115

115

DIAMOND EARRINGS, CHATILA

Marquise and circular-cut diamonds, 3.1 cm, signed Chatila

£6,000-8,000

US\$7,600-10,000

€6,700-8,900

THE PROPERTY OF A LADY OF TITLE



116



117

VARIOUS PROPERTIES

†116

GOLD, AQUAMARINE AND DIAMOND NECKLACE, GRAFF

Pear-shaped, circular and briolette-cut aquamarines, pear-shaped and circular-cut diamonds, gold (European Convention and London hallmarks), 42.5 cm, pendant 9.5 cm, signed Graff, no. GN7569, blue Graff case and pouch
Graff: Certificate of Quality

£18,000-24,000

US\$23,000-30,000
€20,000-27,000

Ω117

DIAMOND CUFF

Circular-cut diamonds, sprung, inner circumference 15.3 cm

£12,000-15,000

US\$15,000-19,000
€14,000-17,000



118

Ω118

SAPPHIRE AND DIAMOND RING

Cushion-shaped sapphire of 4.53 carats, kite-shaped and circular-cut diamonds, ring size L½

SSEF, 2015, report no. 80784: 4.53 carats, Ceylon (Sri Lanka), no indications of heating

£34,000-50,000

US\$43,000-62,000

€38,000-55,000





119

120

119

AQUAMARINE, CULTURED PEARL AND DIAMOND NECKLACE

Polished bead, modified shield and circular-cut aquamarines, cultured pearls, circular-cut diamonds, French import marks, 55.5 cm

£9,000-11,000

US\$12,000-14,000
€10,000-12,000

THE PROPERTY OF A PRIVATE COLLECTOR

***120**

RUBY AND DIAMOND CUFFLINKS

Cabochon rubies, baguette-cut diamonds, mid-20th century, panels 1.3 cm

£2,500-4,000

US\$3,200-5,000
€2,800-4,400

VARIOUS PROPERTIES

121

DIAMOND EARRINGS

Circular, baguette, rectangular and square-cut diamonds, 8.0 cm

£8,000-12,000

US\$11,000-15,000

€8,900-13,000



121

122

COLOURED DIAMOND AND DIAMOND RING

Fancy Yellow round brilliant-cut diamond of 2.50 carats, closed-back, circular-cut diamonds, ring size N½

GIA, 2011, report no. 6147043674: 2.50 carats, Fancy Yellow colour

Please note this report is over 5 years old and may require an update.

£6,000-8,000

US\$7,500-10,000

€6,700-8,900



122

123

DIAMOND RING

Circular-cut diamond of 6.15 carats, tapered baguette-cut diamonds, ring size K½

£20,000-25,000

US\$25,000-31,000

€23,000-28,000



123



124

124

DIAMOND 'JAZZ' NECKLACE AND EARRING SET, TIFFANY & CO.

Pear-shaped and circular-cut diamonds, necklace 41.4 cm, pendant 5.2 cm, earrings 3.7 cm, signed Tiffany & Co.

£5,000-7,000

US\$6,300-8,800

€5,600-7,800



125

125

GOLD, SAPPHIRE AND DIAMOND RING, GRAFF

Circular-cut sapphires and diamonds, pear-shaped diamond of 1.02 carats, gold (European Convention and London hallmarks), ring size L, signed Graff, no. GR37886, blue Graff case

GIA, 2016, report no. 2217587185: 1.02 carats, G colour, VS1 clarity

Graff: Certificate of Quality

£10,000-15,000

US\$13,000-19,000

€12,000-17,000

***126**

GOLD, SAPPHIRE AND DIAMOND EARRINGS, GRAFF

Circular-cut sapphires and diamonds, gold (European Convention and London hallmarks), 5.0 cm, signed Graff, no. 24126, blue Graff case

Graff: Certificate of Quality

£18,000-24,000

US\$23,000-30,000
€20,000-27,000



126

THE PROPERTY OF A PRIVATE COLLECTOR

Ω127

SAPPHIRE AND DIAMOND CUFFLINKS

Circular-cut sapphires and diamonds, panels 1.6 cm

£6,500-9,500

US\$8,100-12,000
€7,200-11,000



127

VARIOUS PROPERTIES

128

SAPPHIRE AND DIAMOND RING

Cushion-shaped sapphire of 4.02 carats, triangular-cut diamonds, ring size M½
Gübelin, 2018, report no. 18030037: 4.02 carats, Burma, no indications of heating

£18,000-25,000

US\$23,000-31,000
€20,000-28,000



128



129



130

†129

DIAMOND NECKLACE, GRAFF

Circular and pear-shaped diamonds, platinum (London hallmark and European Convention mark), 41.8 cm, signed Graff, maker's mark, blue Graff case

GIA, 2010, report no. 2106757336: 1.52 carats, G colour, SI1 clarity

GIA, 2010, report no. 6117770766: 1.02 carats, F colour, SI1 clarity

GIA, 2010, report no. 1112795751: 1.01 carats, F colour, SI1 clarity

Graff: Certificate of Quality

Please note these GIA reports are over 5 years old and may require an update.

£42,000-60,000

US\$53,000-75,000
€47,000-66,000

130

RUBY AND DIAMOND RING

Oval-cut ruby of approximately 2.19 carats, pear-shaped diamonds, ring size P½

GRS, 2019, report no. GRS2019-092489: approximately 2.19 carats, Burma, no indications of thermal treatment

£20,000-25,000

US\$25,000-31,000
€23,000-28,000



131



132

Ω131

DIAMOND NECKLACE, GARRARD & CO.

Old, circular, triangular, marquise and fancy-cut diamonds, the principal circular-cut diamond of 4.43 carats, gold (London hallmarks), 1997, 43.3 cm, maker's mark G & Co. for Garrard & Co., blue Garrard case

£20,000-30,000

US\$25,000-37,000
€23,000-33,000

132

NATURAL PEARL AND DIAMOND PENDANT

Natural pearl drop of 12.8x14.4 mm, pear-shaped, marquise and tapered baguette-cut diamonds, 3.2 cm

Gem & Pearl Laboratory, 2018, report no. 16673: natural pearl, saltwater

£30,000-40,000

US\$38,000-50,000
€34,000-44,000



133



134

133

**TURQUOISE 'ALHAMBRA' NECKLACE AND EARRING SET,
VAN CLEEF & ARPELS**

Turquoise plaques, French marks, necklace 40.0 cm, earrings 1.4 cm, necklace and earrings signed VCA for Van Cleef & Arpels, necklace no. JB048099, earrings no. JB031073, green Van Cleef & Arpels pouch and box

£8,000-12,000

US\$11,000-15,000
€8,900-13,000

134

DIAMOND RING

Rectangular and tapered baguette-cut diamonds, ring size H½

£5,000-7,000

US\$6,300-8,700
€5,600-7,700



135

**DIAMOND AND EBONY WOOD BUTTERFLY BROOCH,
VAN CLEEF & ARPELS**

Circular-cut diamonds, shaped ebony wood panels, French marks, 5.7 cm,
signed VCA for Van Cleef & Arpels, no. BL2316, cream Van Cleef & Arpels case

£4,000-6,000

US\$5,100-7,600

€4,500-6,700



THE PROPERTY OF A LADY OF TITLE

136

**BLACK MOTHER-OF-PEARL AND DIAMOND 'ROSE DE NOËL'
EARRINGS AND BROOCH SET, VAN CLEEF & ARPELS**

Shaped mother-of-pearl panels, circular-cut diamonds, French marks, brooch
5.0 cm, earrings 3.3 cm, each signed Van Cleef & Arpels, no. JB 198321 and JE
46512, green Van Cleef & Arpels pouches

£10,000-15,000

US\$13,000-19,000

€12,000-17,000

Please note that this lot will be subject to US Fish & Wildlife regulations if it
is to be imported into the USA.



137

VARIOUS PROPERTIES

137

**CULTURED PEARL, RUBY, EMERALD AND DIAMOND
NECKLACE, VAN CLEEF & ARPELS**

Cultured pearls, circular-cut ruby and emerald beads, circular-cut diamonds,
38.0 cm, signed VCA for Van Cleef & Arpels, no. 131683

£4,000-6,000

US\$5,000-7,500

€4,500-6,600

THE PROPERTY OF A PRIVATE COLLECTOR

***138**

**EARLY 20TH CENTURY EMERALD CUFFLINKS,
BLACK STARR & FROST**

Circular cabochon emeralds, circa 1925, 1.2 cm wide, maker's mark BS&F for
Black Starr & Frost

£5,000-7,000

US\$6,300-8,700

€5,600-7,700



138



139

VARIOUS PROPERTIES

139

EMERALD, SAPPHIRE AND DIAMOND NECKLACE

Oval and circular cabochon emeralds and sapphires, circular-cut diamonds,
42.0 cm

£8,000-10,000

US\$10,000-12,000

€8,900-11,000

140

SAPPHIRE RING

Oval-cut sapphire of 10.04 carats, ring size M½

GRS, 2016, report no. GRS2016-079518: 10.04 carats, Sri Lanka, no indication
of thermal enhancement

£15,000-20,000

US\$19,000-25,000

€17,000-22,000



140





141

141

MULTI-GEM SET 'CELTICA' SUITE, BULGARI

Calibré cabochon peridots, amethysts, tourmalines, citrines and topaz, necklace 39.6 cm, bangle inner diameter 5.8 cm, earrings 2.2 cm, ring size M½, signed Bulgari, camel Bulgari pouch

£15,000-20,000

US\$19,000-25,000

€17,000-22,000

142

GOLD AND DIAMOND 'SERPENTI' WRISTWATCH, BULGARI

Circular-cut diamonds, cabochon rubelite crown, gold (European Convention marks), case 2.7 cm, red lacquer dial and case signed Bulgari, numbered, Bulgari case

£3,000-5,000

US\$3,800-6,300

€3,400-5,600



142

This lot incorporates material from endangered species which is shown for display purposes only and is not for sale.



143

(alternate view)

THE PROPERTY OF A LADY OF TITLE

143

DIAMOND AND GEM-SET 'ROSE DES VENTS' BRACELET, DIOR

Circular-cut diamonds, lapis lazuli, cornelian, malachite, turquoise, pink opal, tiger's eye and mother of pearl, 18.0 cm, signed Dior, no. 163195, grey Dior case

£8,000-12,000

US\$11,000-15,000

€8,900-13,000

Please note that this lot will be subject to US Fish & Wildlife regulations if it is to be imported into the USA



144

VARIOUS PROPERTIES

144

PAIR OF GEM-SET RINGS

Heart-shaped and circular-cut blue topaz and citrines, ring size H

£5,000-7,000

US\$6,300-8,700

€5,600-7,700



(alternate view)

THE PROPERTY OF A LADY OF TITLE

145

GOLD, DIAMOND AND MOTHER-OF-PEARL 'ROSE DE VENTS' NECKLACE, DIOR

Circular-cut diamonds, mother-of-pearl, gold (UK and European marks), 39.2 cm, signed Dior, no. 143699, grey Dior case

£10,000-15,000

US\$13,000-19,000

€12,000-17,000

Please note that this lot will be subject to US Fish & Wildlife regulations if it is to be imported into the USA .

In addition to the hammer price, a Buyer's Premium (plus VAT) is payable. Other taxes and/or an Artist Resale Royalty fee are also payable if the lot has a tax or λ symbol. Check Section D of the Conditions of Sale at the back of this catalogue.



146

**GOLD AND DIAMOND 'ALHAMBRA' LONGCHAIN NECKLACE,
VAN CLEEF & ARPELS**

Circular-cut diamonds, gold (French, Swiss and European Convention marks), 86.0 cm, detachable to form two shorter necklaces 43.0 cm each, signed VCA for Van Cleef & Arpels, nos. JE491756, B457 and JA200708, R0125, green Van Cleef & Arpels case

£8,000-12,000

US\$10,000-15,000
€8,900-13,000



147



148

VARIOUS PROPERTIES

147

MOTHER-OF-PEARL AND DIAMOND 'ROSE DE NOËL' EARRINGS AND BROOCH SET, VAN CLEEF & ARPELS

Shaped mother-of-pearl panels, circular-cut diamonds, French marks, brooch 5.0 cm, earrings 3.3 cm, each signed Van Cleef & Arpels, no. JA 419203 and JA 384259, green Van Cleef & Arpels pouches

£10,000-15,000

US\$13,000-19,000

€12,000-17,000

148

THREE DIAMOND BANGLES, VAN CLEEF & ARPELS

Circular-cut diamonds, French marks, inner circumference 16.5 cm, each signed Van Cleef & Arpels, nos. B2326 I76, B2326 A34, B2326 D16

£8,000-12,000

US\$11,000-15,000

€8,900-13,000

Please note that this lot will be subject to US Fish & Wildlife regulations if it is to be imported into the USA.



149

THE PROPERTY OF A LADY OF TITLE

149

**JADEITE JADE, DIAMOND, ENAMEL AND LAPIS LAZULI
EARRINGS, DAVID WEBB**

Cabochon and jadeite jade beads, circular-cut diamonds, blue enamel, lapis lazuli, 5.6 cm, signed David Webb

£8,000-12,000

US\$11,000-15,000
€8,900-13,000

150

**JADEITE JADE, DIAMOND AND ENAMEL PENDANT SAUTOIR,
DAVID WEBB**

Carved and bead jadeite jade, circular-cut diamonds, blue enamel, 1970s, necklace 89.2 cm, detachable pendant 8.8 cm, signed David Webb, necklace no. BS 348, pendant no. CS 36, blue David Webb case

£25,000-35,000

US\$32,000-44,000
€28,000-39,000

LITERATURE:

Cf. R. Peltason, David Webb, *The Quintessential American Jeweler*, New York, Assouline, 2013, p.280 illustrating a similar necklace





151



152

VARIOUS PROPERTIES

***151**

GOLD, RUBY AND DIAMOND NECKLACE, GRAFF

Circular-cut rubies, circular-cut diamond of 0.72 carat, pear-shaped and circular-cut diamonds, gold (European Convention and London hallmarks), 42.0 cm, pendant 4.5 cm, signed Graff, no. 8542, blue Graff case and pouch
GIA, 2012, report no. 2141333898: 0.72 carat, G colour, VVS2 clarity
Graff: Certificate of Quality

£40,000-60,000

US\$50,000-75,000
€45,000-66,000

***152**

DIAMOND EARRINGS, MARGHERITA BURGNER

Oval and circular-cut diamonds, 2.3 cm, signed Margherita Burgener, grey Margherita Burgener case

£3,000-4,000

US\$3,800-5,000
€3,400-4,400



153

THE PROPERTY OF A LADY OF TITLE

153

DIAMOND 'SERPENTI' BANGLE, BULGARI

Circular-cut diamonds, sprung, inner circumference 15.0 cm, signed Bulgari

£15,000-20,000

US\$19,000-25,000

€17,000-22,000



154

VARIOUS PROPERTIES

***154**

GOLD, RUBY AND DIAMOND RING, GRAFF

Circular-cut rubies, pear-shaped, circular and marquise-cut diamonds, rotating flowerhead, gold (European Convention and London hallmarks), ring size M, signed Graff, no. GR35132, blue Graff case

Graff: Certificate of Quality

£8,000-12,000

US\$10,000-15,000

€8,900-13,000



155



156



157

†155

DIAMOND EARRINGS, GRAFF

Cut-cornered rectangular modified brilliant-cut diamonds of 3.53 and 3.02 carats, circular-cut diamonds, 2.8 cm, signed Graff, numbered, blue Graff case

GIA, 2013, report no. 2155556287: 3.53 carats, Y-Z colour, VS2 clarity

GIA, 2013, report no. 1156589218: 3.02 carats, U-V colour, VVS1 clarity

Graff: Certificate of Quality

Please note these GIA reports are over 5 years old and may require an update.

£22,000-28,000

US\$28,000-35,000

€25,000-31,000

156

COLOURED DIAMOND AND DIAMOND EARRINGS

Fancy Deep Orangy Yellow circular-cut diamonds of 0.25, 0.22, 0.21, 0.19, 0.18, 0.16 carat, circular-cut coloured diamonds of orangy yellow tint, circular-cut diamonds, 3.1 cm

Accompanied by six GIA reports each stating Fancy Deep Orangy Yellow colour.

Please see condition report for certificate details.

Please note that the remaining coloured diamonds have not been tested for natural colour.

£8,000-12,000

US\$11,000-15,000

€8,900-13,000

†157

COLOURED DIAMOND AND DIAMOND 'WATERFALL' NECKLACE, GRAFF

Rectangular-cut diamonds of yellow tint, circular and pear-shaped diamonds, 42.5 cm, pendant 8.3 cm, signed Graff, numbered, blue Graff case

Graff: Certificate of Quality

£38,000-44,000

US\$48,000-55,000

€42,000-49,000



158



159



160

158

DIAMOND 'FLYING BUTTERFLY' RING, VAN CLEEF & ARPELS

Circular-cut diamonds, French marks, ring size H (two sizing beads), signed VCA for Van Cleef & Arpels, no. BL12513551

£8,000-12,000

US\$10,000-15,000

€8,900-13,000

159

DIAMOND AND COLOURED SAPPHIRE BUTTERFLY EARRINGS, VAN CLEEF & ARPELS

Marquise and circular-cut diamonds, circular-cut yellow sapphires, French marks, 1.5 cm, signed Van Cleef & Arpels, maker's mark, no. BL89200

£7,000-9,000

US\$8,800-11,000

€7,800-10,000

160

DIAMOND RING

Circular-cut diamond of 3.75 carats, baguette and circular-cut diamonds, ring size I

£10,000-15,000

US\$13,000-19,000

€12,000-17,000



161

***161**

GOLD, EMERALD AND DIAMOND EARRINGS, GRAFF

Rectangular-cut emeralds, circular-cut diamonds, gold (European Convention and London hallmarks), 3.4 cm, signed Graff, no. GE19218, blue Graff case

Graff: Certificate of Quality

£9,000-12,000

US\$12,000-15,000

€10,000-13,000



162

***162**

GOLD, EMERALD AND DIAMOND RING, GRAFF

Rectangular-cut emerald, circular-cut diamonds, gold (European Convention and London hallmarks), ring size H ½, signed Graff, no. GR27015, blue Graff case

Graff: Certificate of Quality

£3,000-4,000

US\$3,800-5,000

€3,400-4,400



163

163

EMERALD AND DIAMOND BROOCH, ALDAO

Pear-shaped emerald of 13.55 carats, pear-shaped, marquise, baguette and circular-cut diamonds, 6.8 cm, signed Aldao

Gem & Pearl Laboratory, 2020, report no. 18607: 13.55 carats, Colombia, minor clarity enhancement

£20,000-30,000

US\$25,000-37,000

€23,000-33,000





164

DIAMOND RING, HANCOCKS

Old Mine brilliant-cut diamond of 4.51 carats, single-cut diamonds, platinum (London hallmark), ring size M, signed Hancock's, maker's mark

GIA, 2017, report no. 2185826956: 4.51 carats, J colour, VS1 clarity

£35,000-45,000

US\$44,000-56,000

€39,000-50,000



Ω165

EMERALD AND DIAMOND RING

Square-cut emerald of approximately 2.29 carats, cushion-shaped diamonds, ring size L

AGL, 2019, report no. 1098201: Colombia, no clarity enhancement

£38,000-55,000

US\$48,000-68,000

€42,000-61,000



CARTIER

Lots 166-200





166

166

DIAMOND AND CULTURED PEARL 'AGRAFE' PENDANT NECKLACE AND EARRING SET, CARTIER

Cultured pearls, circular-cut diamonds, necklace 42.6 cm, pendant 11.8 cm, earrings 4.5 cm, signed Cartier, necklace no. XD2539, earrings no. 59309F

£20,000-30,000

US\$25,000-37,000

€23,000-33,000



167

167

DIAMOND DRESS RING, CARTIER

Circular-cut diamonds, French marks, ring size M, signed Cartier, no. UW2054

£4,000-6,000

US\$5,000-7,400

€4,500-6,600



168

168

DIAMOND 'AGRAFE' EARRINGS, CARTIER

Circular-cut diamonds, French marks, 3.3 cm, signed Cartier, no. 72406 A

£3,000-5,000

US\$3,800-6,300

€3,400-5,600

In addition to the hammer price, a Buyer's Premium (plus VAT) is payable. Other taxes and/or an Artist Resale Royalty fee are also payable if the lot has a tax or λ symbol. Check Section D of the Conditions of Sale at the back of this catalogue.



169

169

CULTURED PEARL AND DIAMOND 'HIMALIA' NECKLACE AND EARRING SET, CARTIER

Cultured pearls, circular-cut diamonds, French marks, necklace 38.5 cm, earrings 4.1 cm, signed Cartier, necklace no. 363368, earrings no. 863995, red Cartier case

£15,000-25,000

US\$19,000-31,000
€17,000-28,000



170

170

DIAMOND 'MAILLON PANTHÈRE' RING, CARTIER

Circular-cut diamonds, ring size L, signed Cartier, maker's mark, no. 52082C

£2,500-3,500

US\$3,200-4,300
€2,800-3,900

171

GOLD AND DIAMOND 'TANK AMÉRICAINÉ' WRISTWATCH, CARTIER

Circular-cut diamonds, gold (Swiss and European Convention marks), automatic movement, case width 2.2 cm, inner circumference 14.3 cm, signed Cartier, maker's marks, no. 80377QX 2490

£12,000-18,000

US\$16,000-23,000

€14,000-20,000



171

THE PROPERTY OF A LADY OF TITLE

172

GOLD AND DIAMOND 'DIAGONALE' WRISTWATCH, CARTIER

Circular-cut diamonds, red and black enamel, gold (European Convention marks), quartz movement, Cartier pin buckle, case width 1.9 cm, signed Cartier, Limited Edition 20/50, 4196

£5,000-7,000

US\$6,300-8,800

€5,600-7,800

This lot incorporates material from endangered species which is shown for display purposes only and is not for sale.



172

VARIOUS PROPERTIES

Ω173

TWO DIAMOND RINGS AND A SAPPHIRE AND DIAMOND RING, CARTIER

Circular-cut diamonds and sapphires, French marks, ring sizes P½ and Q½ (with sapphires), each signed Cartier, nos. TS6453, WX1277 and OP4208, red Cartier cases

£4,000-6,000

US\$5,100-7,600

€4,500-6,700



173



174

174

COLOURED SAPPHIRE AND DIAMOND 'PARIS NOUVELLE VAGUE' SUITE, CARTIER

Circular-cut pink sapphires and diamonds, French marks, necklace 53.5 cm (maximum length), earrings 2.8 cm, ring size M, signed Cartier, necklace no. YT1723, earrings no. WJ6332, ring no. YF9364

£8,000-12,000

US\$10,000-15,000

€8,900-13,000



175
(illustrated reduced)



175

LIGHTER, CARTIER WITH ASSOCIATED CIGARETTE CASE AND COMPACT

Textured and engine-turned pattern work, lighter 6.9 cm, 82.6 gr., signed Cartier Paris, no. 95534, red Cartier fitted case, cigarette case 11.0x7.9x0.7 cm, 180.1 gr., compact 6.3x7.9x1.1 cm, 107.7 gr.

£4,000-6,000

US\$5,000-7,500

€4,500-6,600



176

GOLD AND DIAMOND 'DIABOLO' WRISTWATCH, CARTIER

Circular-cut diamonds, gold (Swiss and European Convention marks), quartz movement, case width 2.7 cm, inner circumference 15.0 cm, signed Cartier, maker's marks, no. 1450 C89701

£2,000-3,000

US\$2,500-3,700

€2,300-3,300



176



177



178

177

DIAMOND 'CACTUS DE CARTIER' PENDANT NECKLACE AND RING SET, CARTIER

Circular-cut diamonds, gold (European Convention, Swiss and French marks), necklace 79.0 cm, ring size K, signed Cartier, necklace no. CSF571, ring no. CPS171

£6,000-8,000

US\$7,600-10,000

€6,700-8,900

178

GOLD AND DIAMOND 'BAIGNOIRE' WRISTWATCH, CARTIER

Circular-cut diamonds, gold (Swiss and European Convention marks), mechanical movement, case width 3.2 cm, signed Cartier, maker's marks, no. 95284PX 3033

£10,000-12,000

US\$13,000-15,000

€12,000-13,000

This lot incorporates material from endangered species which is shown for display purposes only and is not for sale.

THE PROPERTY OF A LADY OF TITLE

179

DIAMOND AND GOLD 'ÉCROU' BRACELET, CARTIER

Baguette-cut diamonds, inner circumference 15.0 cm, signed Cartier, no. HTX699

£4,000-6,000

US\$5,000-7,500

€4,500-6,600



179

In addition to the hammer price, a Buyer's Premium (plus VAT) is payable. Other taxes and/or an Artist Resale Royalty fee are also payable if the lot has a tax or λ symbol. Check Section D of the Conditions of Sale at the back of this catalogue.



180



181

THE PROPERTY OF A PRIVATE COLLECTOR

***180**

ART DECO GOLD AND SAPPHIRE CIGARETTE CASE, CARTIER

Cabochon, square and triangular-cut sapphires, gold (French marks), circa 1930, 12.8x8.3x0.8 cm, 255.0 gr., signed Cartier, maker's mark, no. 61570

£5,000-7,000

US\$6,300-8,700

€5,600-7,700

***181**

GOLD AND SAPPHIRE CIGARETTE CASE, CARTIER

Rectangular and triangular-cut sapphires, gold (London hallmarks), 1940, inscription to interior, 12.7x8.1x0.9 cm, 304.4 gr., signed Cartier London, maker's mark, no. 4598

£5,000-7,000

US\$6,300-8,700

€5,600-7,700



182

VARIOUS PROPERTIES

182

GOLD, DIAMOND AND ENAMEL CHARM BRACELET, CARTIER

Square and circular-cut diamonds, enamel, gold (French and European Convention marks), ten charms including a ladybird, a pen, a plane, a 'Love' bangle, a lighter, a panthère, a 'Santos' watch, a flamingo, a number '13' and a double 'C de Cartier' logo, bracelet and each charm signed Cartier and numbered, 18.5 cm, red Cartier box

£7,000-9,000

US\$8,800-11,000

€7,800-10,000





183

183

**CULTURED PEARL AND DIAMOND 'HIMALIA' LONGCHAIN
NECKLACE, CARTIER**

Multi-coloured cultured pearls, circular-cut diamonds, French marks, 125.0 cm,
signed Cartier, no. 61099C

£20,000-30,000

US\$26,000-38,000

€23,000-33,000



(alternate views)



184



(alternate views)

Ω184

MID-20TH CENTURY MULTI-GEM AND DIAMOND FLOWER BROOCH, CARTIER

Circular-cut rubies, sapphires, emeralds and diamonds, French marks, mounted *en tremblant*, the petals with 'open and shut' mechanism, circa 1960, 6.5 cm, signed Cartier, nos. 2446 and 015505, red Cartier case

£4,000-6,000

US\$5,000-7,500

€4,500-6,600



185



186

THE PROPERTY OF A PRIVATE COLLECTOR

***185**

ART DECO SAPPHIRE DRESS SET, ATTRIBUTED TO CARTIER

Square-cut sapphires, cabochon sapphire points, circa 1930, cufflinks and buttons 0.9 cm, studs 0.5 cm, unsigned, numbered, red Cartier case

£10,000-15,000

US\$13,000-19,000
€12,000-17,000

VARIOUS PROPERTIES

186

ART DECO SAPPHIRE CUFFLINKS, CARTIER

Sugarloaf sapphires, French marks, circa 1935, terminals 1.1 cm, signed Cartier Paris, maker's mark, no. 04962

£2,800-3,500

US\$3,600-4,400
€3,200-3,900



187

Ω187

AGATE AND DIAMOND TURTLE BROOCH, CARTIER

Carved agate, rose-cut diamonds, French marks, 5.0 cm, signed Cartier Paris, maker's mark, no. P7GG9

£2,500-3,500

US\$3,200-4,400
€2,800-3,900



188

188

TWO ART DECO LACQUER AND DIAMOND BROOCHES, CARTIER

Old and rose-cut diamonds, white, red and black lacquer, French marks, circa 1938, 4.5 cm, each signed Cartier Paris, numbered (indistinctly)

£10,000-15,000

US\$13,000-19,000
€12,000-17,000

Cf. N. Coleno, *Amazing Cartier*, Flammarion, 2009, p. 54, for a similar black lacquer hand and rose clip, Paris 1938



189

189

MID-20TH CENTURY DIAMOND EARRINGS, CARTIER

Circular-cut diamonds, French marks, circa 1950, 2.5 cm, signed Cartier

£8,000-12,000

US\$11,000-15,000

€8,900-13,000



190



(alternate view)

~190

MID-20TH CENTURY CORAL AND DIAMOND RING, CARTIER

Bombé form, carved coral, circular and single-cut diamonds, 1950s, ring size L, signed Cartier Paris

£15,000-20,000

US\$19,000-25,000

€17,000-22,000





Ω191

EMERALD, ONYX AND ENAMEL 'PANTHÈRE' BANGLE, CARTIER

Pear-shaped emeralds, buff-top onyx, enamel, inner circumference 16.8 cm, signed Cartier, no. 6334631

Cartier, 1998: Certificate of authenticity

£20,000-30,000

US\$25,000-37,000

€23,000-33,000





192

192

ART DECO DIAMOND WRISTWATCH, CARTIER

Old and rose-cut diamonds, French marks, mechanical movement, circa 1920, case width 2.0 cm, inner circumference 13.2 cm, dial signed Cartier, case no. 27347 24138, deployant clasp no. 767

£5,000-7,000

US\$6,300-8,800
€5,600-7,800



193

193

ART DECO DIAMOND WRISTWATCH, CARTIER

Rose-cut diamonds, platinum and gold (French marks), mechanical movement, circa 1920, case width 1.5 cm, inner circumference 15.5 cm, signed Cartier, no. 19955 9531 (partially indistinct)

£6,000-8,000

US\$7,600-10,000
€6,700-8,900

LITERATURE:

Cf. J. Barracca, G. Negretti and F. Nencini, *Le Temps de Cartier*, Milan, Wrist International, 1989, p. 68 for similar examples



194

194

EARLY 20TH CENTURY PEARL, DIAMOND AND ONYX WRISTWATCH, CARTIER

Seed pearls, rose-cut diamonds, onyx, platinum and gold (French marks), mechanical movement, deployant clasp, case width 1.9 cm, inner circumference 15.5 cm, circa 1915, dial signed Cartier, maker's mark for Edmond Jaeger, case no. 13339, red S.J Phillips case

£15,000-20,000

US\$19,000-25,000
€17,000-22,000



195

195

EARLY 20TH CENTURY PEARL AND DIAMOND BROOCH, CARTIER

Old and rose-cut diamonds, seed pearls, gold (French marks), circa 1910, width 6.0 cm, signed Cartier Paris, no. 5785

£6,000-8,000

US\$7,500-10,000
€6,700-8,900



Ω196

RUBY AND DIAMOND RING, CARTIER

Circular-cut ruby of 4.00 carats, circular-cut diamonds, French marks, ring size L½, signed Cartier, no. 743210

Gübelin, 2013, report no. 13036018: 4.00 carats, Burma, no indications of heating

£170,000-250,000

US\$220,000-310,000
€190,000-280,000





197

THE PROPERTY OF A LADY OF TITLE

197

GOLD, ONYX, EMERALD AND DIAMOND 'PANTHÈRE' PENDANT NECKLACE, CARTIER

Onyx beads, carved and buff-top onyx, circular-cut emeralds and diamonds, gold (French, Swiss and European Convention marks), necklace 39.5 cm, pendant 11.0 cm, signed Cartier, no. EDQ204, red Cartier pouch

£15,000-25,000

US\$19,000-31,000
€17,000-28,000



198

198

GOLD, ONYX, EMERALD AND DIAMOND 'PANTHÈRE' RING, CARTIER

Carved and buff-top onyx, pear-shaped emeralds, circular-cut diamonds, gold (French, Swiss and European Convention marks), ring size L, signed Cartier, no. FGN447, red Cartier pouch

£8,000-12,000

US\$10,000-15,000
€8,900-13,000



199

199

ONYX, EMERALD AND DIAMOND 'PANTHÈRE' EARRINGS, CARTIER

Carved and buff-top onyx, pear-shaped emeralds, circular-cut diamonds, French marks, 3.3 cm, signed Cartier, no. BRD135, red Cartier pouch

£10,000-15,000

US\$13,000-19,000
€12,000-17,000





Cartier

JOAILLIERS
PARIS LONDRES NEW YORK



200

“CHEVREFEUILLE”

*Ring,
Platinum, emerald and diamonds*

Reference: CRH4218552

Serial number: QQ8729

Platinum: 19 g

1 emerald cabochon cut: 6.62 cts Colombia (SSEF 58036)

158 diamonds round cut: 4.02 cts

200

PLATINUM, EMERALD AND DIAMOND 'CHEVREFEUILLE' RING, CARTIER

Sugarloaf cabochon emerald of 6.62 carats, circular-cut diamonds, platinum (London hallmarks and French marks), 2012, ring size K½, signed Cartier, maker's mark JC, no. 008729, red Cartier case

SSEF, 2010, report no. 58036: 6.622 carats, Colombia, minor oil

Cartier: Fact sheet

£18,000-25,000

US\$23,000-31,000

€20,000-28,000

Please note that the report is over 5 years old and may require an update.





201



202



(side view)

VARIOUS PROPERTIES

†201

GOLD, SAPPHIRE AND DIAMOND BOMBÉ EARRINGS, GRAFF

Circular-cut sapphires and diamonds, gold (European Convention and London hallmarks), 2.0 cm, signed Graff, no. GE24289, blue Graff case

Graff: Certificate of Quality

£15,000-18,000

US\$19,000-23,000
€17,000-20,000

†202

GOLD, SAPPHIRE AND DIAMOND BOMBÉ RING, GRAFF

Oval-cut sapphires, circular-cut diamonds, gold (European Convention and London hallmarks), ring size K ½, signed Graff, no. GR18950, blue Graff case

Graff: Certificate of Quality

£15,000-18,000

US\$19,000-22,000
€17,000-20,000



203



204

THE PROPERTY OF A LADY OF TITLE

203

SAPPHIRE AND DIAMOND EARRINGS, DAVID WEBB

Oval-cut and pear shaped sapphires, circular and baguette-cut diamonds, 5.9 cm, signed David Webb, blue David Webb case

Gem & Pearl Laboratory, 2020, report no. 18537: Sri Lanka, small oval sapphire mounted with large oval sapphire heated, three others: no evidence of heat treatment

£15,000-20,000

US\$19,000-25,000
€17,000-22,000

VARIOUS PROPERTIES

204

SAPPHIRE AND DIAMOND RING

Sugarloaf cabochon sapphire of 8.98 carats, circular-cut and trapezoid-shaped diamonds, ring size L

AGL, 2014, report no. CS 62691: 8.98 carats, Ceylon (Sri Lanka), no indications of heating

£15,000-20,000

US\$19,000-25,000
€17,000-22,000



205

205

EMERALD AND DIAMOND RING

Oval-cut emerald of approximately 8.25 carats, triangular-cut diamonds, ring size M

Gübelin, 2019, report no. 19027194: approximately 8.25 carats, Colombia, indications of minor clarity enhancement

£30,000-40,000

US\$38,000-50,000

€34,000-44,000

THE PROPERTY OF A SPANISH FAMILY

206

**MID-20TH CENTURY EMERALD AND DIAMOND BRACELET/
WATCH**

Cabochon emerald, old circular and single-cut diamonds, mechanical movement, dial signed Jaeger-LeCoultre, 18.5 cm

£8,000-10,000

US\$10,000-12,000

€8,900-11,000



206





207

VARIOUS PROPERTIES

•207

EMERALD NECKLACE

Faceted emerald beads, circular green paste and silver clasp, 61.0 cm

£5,000-7,000

US\$6,300-8,700

€5,600-7,700

THE PROPERTY OF A LADY

208

19TH CENTURY DIAMOND EARRINGS

Old-cut pear and cushion-shaped diamonds, silver and gold, circa 1869, later fittings, 5.4 cm

£30,000-40,000

US\$38,000-50,000

€34,000-44,000

Sold to benefit the Magdi Yacoub Foundation for Heart Research

By family tradition, these earrings were a gift from Empress Eugénie of France on the occasion of her visit to Egypt for the inauguration of the Suez Canal on 17th November 1869.

The construction of the Suez Canal, linking the Red and the Mediterranean Seas, started on the shore of the future Port Said on 25th April 1859 and took some 10 years to complete.

In what was to be an international event of huge significance, Khedive Isma'il Pasha of Egypt invited Empress Eugénie to preside over the inauguration. After the religious ceremonies were complete and to the sound of a canon salute, the imperial yacht L'Aigle, with Eugénie aboard, undertook the first voyage down the canal followed by a flotilla of ships bearing the Viceroy, the Emperor of Austria, the Crown Prince of Prussia and the ambassadors of Great Britain and Russia.



208



209

VARIOUS PROPERTIES

209

DIAMOND EARRINGS

Circular-cut diamonds of 10.26 and 9.67 carats, circular and baguette-cut diamonds, 3.0 cm

GIA, 2019, report no. 5202562720: 10.26 carats, S-T colour, VVS2 clarity

GIA, 2019, report no. 2203562775: 9.67 carats, Q-R colour, VS2 clarity

£70,000-100,000

US\$88,000-130,000

€78,000-110,000





210

NATURAL PEARL, SAPPHIRE AND DIAMOND NECKLACE

Eighty-four natural pearls of approximately 8.6-8.9 to 4.2 mm, circular-cut sapphires, single-cut diamonds, 56.7 cm

Gem & Pearl Laboratory, 2019, report no. 16956: natural pearls, saltwater

£20,000-30,000

US\$25,000-37,000

€23,000-33,000



211



(alternate view)

211

EMERALD AND DIAMOND RING

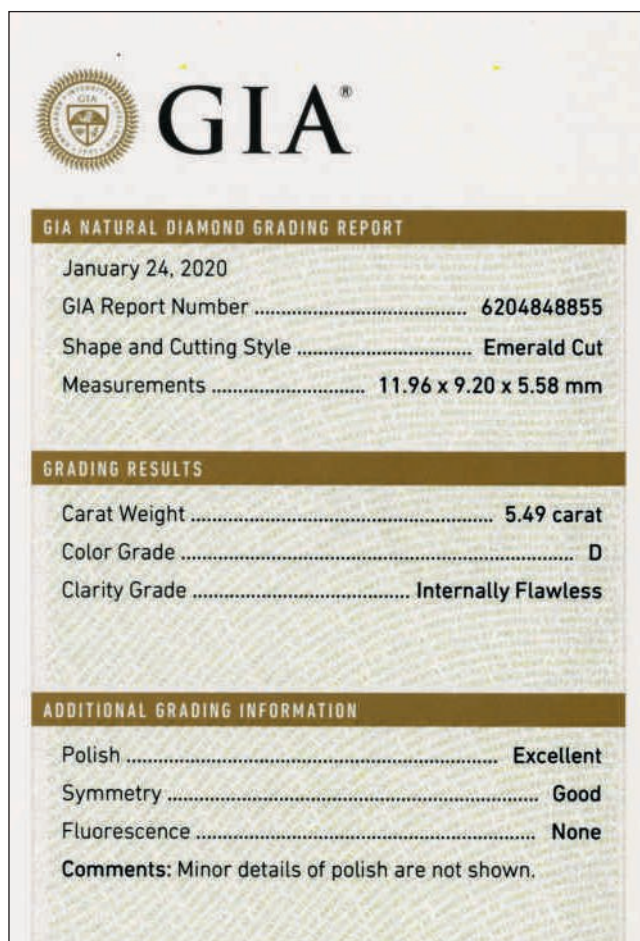
Step-cut emerald of 4.60 carats, single-cut diamonds, ring size L½

Gübelin, 2018, report no. 18050149: 4.60 carats, Colombia, no indications of clarity enhancement

£18,000-25,000

US\$23,000-31,000

€20,000-27,000



212

Ω212

DIAMOND RING, GRAFF

Rectangular-cut diamond of 5.49 carats, tapered baguette-cut diamonds, ring size O½, signed Graff

GIA, 2020, report no. 6204848855: 5.49 carats, D colour, Internally Flawless clarity

GIA, 2003, report no. 12406679: 5.49 carats, D colour, Internally Flawless clarity

£170,000-190,000

US\$220,000-240,000
€190,000-210,000





213

NATURAL PEARL, SAPPHIRE AND DIAMOND NECKLACE

Twenty-seven natural pearls of 11.9 to 7.2 mm, bead and oval-cut sapphires, old circular and single-cut diamonds, Art Deco clasp, 39.0 cm

Gem & Pearl Laboratory, 2020, report no. 18469: natural pearls, saltwater

£20,000-30,000

US\$26,000-38,000

€22,000-33,000



214



215



217



216

214

EARLY 20TH CENTURY RUBY AND DIAMOND EARRINGS

Oval-cut rubies, circular and single-cut diamonds, circa 1910, later rhodium plated, 3.4 cm

AGL, 2016, report no. CS 1073372 A and B: Burma, heat enhancement: none

£12,000-15,000

US\$16,000-19,000

€14,000-17,000

216

ART DECO DIAMOND BRACELET

Old circular, baguette, single and square-cut diamonds, circa 1930, 18.0 cm

£25,000-30,000

US\$32,000-37,000

€28,000-33,000

215

RUBY AND DIAMOND RING

Cushion-shaped ruby, circular and single-cut diamonds, platinum (London hallmark), ring size L½

Gem & Pearl Laboratory, 2020, report no. 18479: Burma, no evidence of heat treatment

£15,000-20,000

US\$19,000-25,000

€17,000-22,000

217

ART DECO DIAMOND AND RUBY RING

Old, calibré and triangular-cut diamonds, calibré-cut rubies, gold (French marks), circa 1935, ring size L½

£15,000-20,000

US\$19,000-25,000

€17,000-22,000



218

218

**EARLY 20TH CENTURY NATURAL PEARL AND DIAMOND
NECKLACE**

Three rows of 122, 121 and 137 natural pearls measuring approximately 6.8-2.2 mm, circular and single-cut diamonds, 1910s, 44.0 cm

Gem & Pearl Laboratory, 2020, report no: 18687: Natural pearls, saltwater

£7,000-10,000

US\$8,800-13,000

€7,800-11,000

219

ART DECO RUBY AND DIAMOND CUFF, UDALL & BALLOU

Square, rectangular and calibr -cut rubies, circular-cut diamonds, circa 1930, inner circumference 15.3 cm, signed Udall & Ballou

 20,000-25,000

US\$25,000-31,000
 23,000-28,000



219

220

PLATINUM, RUBY AND DIAMOND EARRINGS, DRAYSON

Square-cut rubies, circular-cut diamonds, platinum (London hallmark), circa 1950, 3.1 cm, signed Drayson

 12,000-15,000

US\$16,000-19,000
 14,000-17,000



220



221

Ω221

DIAMOND AND EMERALD EARRINGS

Modified pear brilliant-cut diamonds of 3.11 and 2.71 carats, old European brilliant-cut diamonds of 0.89 and 0.84 carat, octagonal step-cut emeralds of 1.32 and 1.14 carats, 3.1 cm

GIA, 2018, report no. 6301771282: 3.11 carats, H colour, SI1 clarity

GIA, 2018, report no. 7306771279: 2.71 carats, G colour, VS1 clarity

GIA, 2018, report no. 2306773328: 0.89 carat, J colour, I1 clarity

GIA, 2018, report no. 1308773314: 0.84 carat, J colour, I1 clarity

GRS, 2018, report no. GRS2018-099237: 1.32 carats, Colombia, insignificant

GRS, 2018, report no. GRS2018-099238: 1.14 carats, Colombia, insignificant

£50,000-70,000

US\$63,000-88,000

€56,000-78,000

In addition to the hammer price, a Buyer's Premium (plus VAT) is payable. Other taxes and/or an Artist Resale Royalty fee are also payable if the lot has a tax or λ symbol. Check Section D of the Conditions of Sale at the back of this catalogue.



222

THE PROPERTY OF A LADY

222

EMERALD AND DIAMOND RING

Rectangular step-cut emerald of 10.34 carats, baguette-cut diamonds,
ring size J

SSEF, 2020, report no. 112978: 10.34 carats, Colombia, minor oil

Gem & Pearl Laboratory, 2013, report no. 09118: Colombia, moderate clarity
enhancement

£40,000-60,000

US\$50,000-75,000

€45,000-66,000







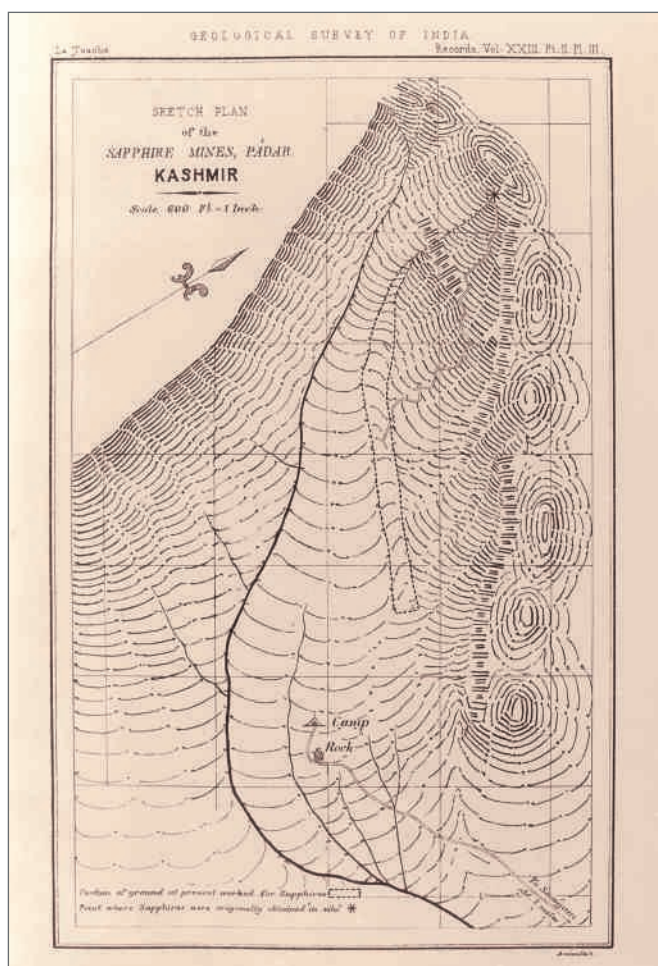
The fabled Kashmir sapphire mines are located in the small Kudi Valley, near the hamlet of Sumjam, high in the Great Himalayan mountains of northwestern India. La Touche, T.D. (1890) The sapphire mines of Kashmir. Records, Geological Survey of India, Vol. 23, Part 2, pp. 59-69.



223



(alternate view)



The earliest extant map of the Kashmir sapphire deposit, published in 1890.
La Touche, T.D. (1890) The sapphire mines of Kashmir. Records, Geological Survey India, Vol. 23, Part 2, pp. 59-69



(alternate view)

VARIOUS PROPERTIES

Ω223

FINE SAPPHIRE AND DIAMOND RING

Cushion-shaped sapphire of 9.11 carats, cushion-shaped diamonds, ring size L
SSEF, 2014, report no. 75203: 9.11 carats, Kashmir, no indications of heating
AGL, 2014, report no. CS61364, 9.11 carats, Kashmir, no indications of heating
Gübelin, 2014, report no. 14067114: 9.11 carats, Kashmir, no indications of heating

£420,000-580,000

US\$530,000-720,000

€470,000-640,000





GLORIA

Property from the late Dowager Countess Bathurst



The Bathurst Jewels

Property from the late Gloria, Countess Bathurst (1927–2018)

The epitome of style and glamour, Lady Bathurst was a successful model in the late 1940s and 1950s, working for couturiers such as Jacques Fath and Christian Dior as well as featuring on the pages of *Vogue* and going on to become known as Britain's 'most perfect outdoor girl'.

Born Gloria Clarry, Lady Bathurst first married lawyer David Rutherford (1925–1975) in 1965, son of the artist Albert Rutherford (1881–1953). Following the death of her first husband in 1975, Gloria married Henry, 8th Earl Bathurst (1927–2011) in 1978 and moved to his family seat, Cirencester Park, Gloucestershire. It is at an early party at Cirencester Park that she is photographed wearing the magnificent Bathurst Tiara attributed to Cartier (Lot 236), commissioned by the *Morning Post* heiress, Lillas, Countess Bathurst (the 8th Earl's grandmother), illustrated in the coming pages.

The jewellery offered here (Lots 224–236), was commissioned or acquired by successive generations of the Bathurst family. From pearls thought to be a gift from Queen Anne to Catherine, wife of 1st Earl Bathurst (1684–1775) – always considered a great heirloom, these pearls (Lot 228) feature in several family portraits of ladies of the Bathurst family – through to the striking Art Deco pendant watch by Cartier (Lot 224) given as token of love by Lord Apsley, the Bathurst heir, to his bride in the early 1920s.

These splendid jewels have never before been offered for sale and this collection, offered alongside a dedicated collection sale being held at Christie's in London on 22 July, provides a rare and evocative window on a layered aristocratic collection through the lens of chosen acquisitions, inheritance and personal gifts amassed over a period of three hundred years.



A portrait of Lady Apsley by Philip Alexius de Laszlo.



224

**ART DECO ENAMEL, GEM-SET AND DIAMOND PENDANT
WATCH, CARTIER**

Buff top onyx, old, single and rose-cut diamonds, calibr -cut rubies, emerald beads, polychrome and black enamel, locket compartment, hidden engraved poem and dedication, mechanical movement, platinum (French marks), circa 1925, fob 4.1 cm, chain 91 cm, signed Cartier to the dial, Cartier box

£30,000-40,000

US\$38,000-50,000

 34,000-44,000

PROVENANCE:

Given by Allen Bathurst, Lord Apsley (1895-1942) to his wife Violet (Viola) Meeking (1895-1966), possibly on the occasion of their marriage on 27 February 1924 and by descent.

LITERATURE:

Cf. J. Rudoe, *Cartier 1900-1939*, New York, 1997, p.170, fig.95 for a pendant watch of similar design, made by Lavabre and Jaeger for Cartier Paris in 1925





225

**EARLY 20TH CENTURY ENAMEL AND DIAMOND DRESS-SET,
CARTIER**

Old and rose-cut diamonds, white enamel, platinum and gold (French marks), one stud deficient, circa 1910, maker's mark LK, one cufflink and one stud no. 1733, original fitted Cartier case, with embossed dedication to lid 'Johnnie Dec 18 1912' and to the base 'From Herbert Johnson to his godson H. A. J. Bathurst 1949'

£3,000-5,000

US\$3,800-6,200

€3,400-5,500





226

226

GOLD 'MONTRE BRACELET OVALE' WRISTWATCH, CARTIER

Cabochon sapphire, gold, (London hallmarks), 1967, mechanical movement, signed Cartier, no. 10450, 7985 and 1276

£1,000-1,500

US\$1,300-1,900

€1,200-1,700



227

227

CITRINE AND DIAMOND EARRINGS, CARTIER

Oval, pear, navette and fancy-cut citrine, circular-cut diamonds, circa 1940, 6.6 cm, signed Cartier London, no. K4007, fitted Cartier case

£15,000-20,000

US\$19,000-25,000

€17,000-22,000

THE BATHURST QUEEN ANNE PEARLS



Detail of A portrait of Lilius, Countess of Bathurst by Sir James Jebusa Shannon, wearing Lot 228.

228

ANTIQUE NATURAL PEARL AND DIAMOND NECKLACE

Composed of 39 natural pearls measuring 6.4 - 8.4mm, pear shaped and old-cut diamonds, silver and gold, 18th century and later, 38.8 cm

Gem & Pearl Laboratory, 2020, report no. 18538: natural pearls, saltwater

£10,000-15,000

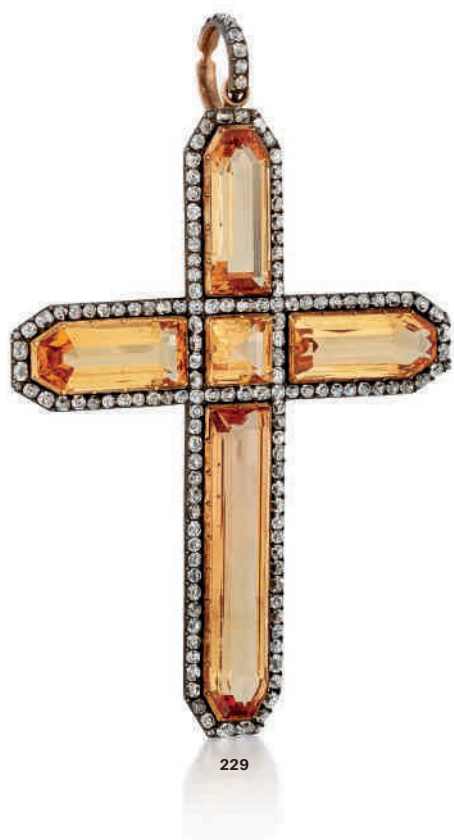
US\$13,000-19,000

€12,000-17,000

PROVENANCE:

By family tradition these pearls were given by Queen Anne to Catherine Apsley (1688- 1768), wife of Allen Bathurst (1684-1775), created 1st Baron Bathurst in 1712 and subsequently 1st Earl Bathurst in 1772. Allen Bathurst's father, Sir Benjamin Bathurst (c.1639-1704) held numerous positions at court from 1682, culminating in his appointment as Her Majesty's Cofferer of the Household in 1702, his wife Frances Apsley (1653-1727) was an intimate friend of both Queen Mary (1662-1694) and her sister, Queen Anne (1665-1714), having served as Maid of Honour when they were princesses.

This necklace has always been revered as a Bathurst family heirloom and as such was depicted in both Thomas Gainsborough's painting of Tryphena, Countess Bathurst (d. 1807) and Sir James Jebusa Shannon's painting of Lilius, Countess Bathurst (1871-1965) (illustrated, lot 127 in the collection sale).



229

229

EARLY 19TH CENTURY TOPAZ AND DIAMOND CROSS

Elongated fancy-shaped and square-cut topaz, old-cut diamonds, partially closed-set, silver and gold, circa 1800, 10.3 cm

£10,000-15,000

US\$13,000-19,000
€12,000-17,000

PROVENANCE:

By family tradition, left by H.R.H. The Princess Amelia (1783-1810), daughter of George III, to her Lady in Waiting The Hon. Mrs George Villiers (1775-1856) and by descent to her great granddaughter Lillas Borthwick, later Countess Bathurst (1871-1965) and by descent in the Bathurst family.



230

230

EARLY 19TH CENTURY CANNETILLE PEARL AND DIAMOND EARRINGS

Old-cut diamonds, pearls and half pearls, gold wirework, circa 1820, 6.7 cm

£4,000-6,000

US\$5,100-7,500
€4,500-6,700

LATE 19TH CENTURY
NATURAL PEARL AND DIAMOND
TIARA / NECKLACE





THE BATHURST JEWELS



Lillias Countess Bathurst (1871-1965) photographed wearing Lot 231 with state robes for the coronation of HM King Edward VII, 1902. © The Victoria & Albert Museum.



231

LATE 19TH CENTURY NATURAL PEARL AND DIAMOND TIARA / NECKLACE

Round and drop shaped natural pearls, old and rose-cut diamonds, silver and gold, circa 1890, detachable tiara frame, 7.5 cm high, 36.2 cm as necklace

Gem & Pearl Laboratory, 2020, report no. 18476: natural pearls, saltwater

£25,000-35,000

US\$32,000-44,000

€28,000-39,000

PROVENANCE:

Given by Seymour Bathurst, 7th Earl Bathurst (1864-1943) to his wife Liliias, Countess Bathurst (1871-1965) to mark the birth of their first child, Lady Meriel Bathurst, born 3 Sep 1894, and by descent.







232

ANTIQUE NATURAL PEARL NECKLACE

Composed of 39 principal natural pearls measuring 8.2 - 6.6mm, and 22 further later added natural pearls, half pearl clasp, gold, circa 1850, 44.5 cm, fitted case with handwritten 19th century notes

Gem & Pearl Laboratory; 2020, report no. 18477: natural pearls, saltwater

£20,000-30,000

US\$25,000-37,000

€23,000-33,000

PROVENANCE:

According to inscribed label, given by HRH The Princess Mary, Duchess of Gloucester, daughter of George III (1776-1857), to her lady-in-waiting, Lady Georgina Bathurst (1792-1874) and by descent to her niece Selina Bathurst, by whom given to Evelyn Countess Bathurst on the occasion of her marriage in June 1874 and by descent.

One pearl from this necklace was donated to the Red Cross appeal, 1918.



Lilias, Countess Bathurst wearing Lot 233 and 234.



233

EARLY 19TH CENTURY DIAMOND EARRINGS

Old-cut diamonds, silver and gold, later screw post fittings, circa 1830, 6.5 cm

£30,000-40,000

US\$38,000-50,000

€34,000-44,000



MID-19TH CENTURY
DIAMOND NECKLACE



Lilias, Countess Bathurst wearing Lot 231 and 234.





234

MID-19TH CENTURY DIAMOND NECKLACE

Old-cut diamonds, partially closed-set, silver and gold, central panel later reorientated with modern cultured pearl drop addition, 41.4 cm long

£60,000-80,000

US\$75,000-100,000

€67,000-89,000



Lilias, Countess Bathurst wearing Lot 234 and 235.



235

EARLY 20TH CENTURY DIAMOND CORSAGE ORNAMENT, ATTRIBUTED TO CARTIER

Old and rose-cut diamonds, silver and gold, detachable brooch fitting, circa 1910, 12.0x10.4 cm, partial stamp 'LON', original fitted Cartier case

£60,000-80,000

US\$76,000-100,000

€67,000-89,000

PROVENANCE:

Commissioned from Cartier by Lillas, Countess Bathurst (1871-1965).

LITERATURE:

Cf. J. Rudoe, *Cartier 1900-1939*, New York, 1997, p.79 for a devant de corsage of similar design made by Georges Harnichard for Cartier in 1912

This brooch was commissioned alongside the Bathurst tiara, attributed to Cartier, Lot 236.



Gloria, Countess Bathurst wearing Lot 233 and 236.

EARLY 20TH CENTURY DIAMOND TIARA,
ATTRIBUTED TO CARTIER





THE BATHURST TIARA





236

EARLY 20TH CENTURY DIAMOND TIARA, ATTRIBUTED TO CARTIER

Old and rose-cut diamonds, silver and gold, circa 1910, 31.2 cm wide, maker's mark GH for Georges Harnichard, original Cartier case

£200,000-300,000

US\$260,000-380,000
€230,000-330,000

PROVENANCE:

Commissioned from Cartier by Lilius, Countess Bathurst (1871-1965).

This impressive tiara and the preceding corsage brooch (Lot 235), were commissioned from Cartier, London, by Lilius, Countess Bathurst either immediately before or after The Great War. Lilius Bathurst (1871-1965) née Borthwick was the daughter of Algernon Borthwick, 1st Baron Glenesk (1830-1908), owner of *The Morning Post* newspaper. Following the death of her brother, Oliver, in 1905, she became her father's sole heir, and went on to inherit his vast fortune as well as his newspaper, which she would personally run for the ensuing thirty years before its sale and merger with *The Daily Telegraph* in 1937. Lady Bathurst noted that the stones for this tiara came from two tiaras belonging to her late mother, Lady Glenesk, who had died in 1898.



Gloria, Countess Bathurst wearing Lot 233 and 236.

INDEX

- A**
Asprey 55
- B**
Black Starr & Frost 138
Boivin, R. 97
Boucheron 5, 106
Buccellati 43, 44
Buccellati, M. 74
Bulgari 6, 7, 8, 12, 41, 141, 142, 153
Burgener, M. 28, 152
- C**
Cartier, 166, 167, 168, 170, 171, 172, 173, 174, 175, 176, 177, 178, 179, 180, 181, 182, 183, 184, 185, 186, 187, 188, 189, 190, 191, 192, 193, 194, 195, 196, 197, 198, 199, 200, 224, 225, 226, 227, 235, 236
Chanel 40
Chatila 115
Chaumet 52
- D**
De Grisogono 22, 23
Dior 143, 145
Drayson 220
- G**
Garrard & Co. 131
Graff 27, 111, 116, 125, 126, 129, 151, 154, 155, 157, 161, 162, 201, 202, 212
- H**
Hancocks 164
- J**
Jaeger-LeCoultre 39
- K**
Kutchinsky 15
- L**
Lacloche Frères 107
- R**
Ralph Lauren 20
Rolex 29
- S**
Schlumberger, J. 49
Shreve & Co. 92
- T**
Tiffany & Co. 50, 124
- U**
Udall & Ballou 219
- V**
Van Cleef & Arpels 1, 2, 4, 11, 14, 45, 46, 48, 54, 56, 109, 133, 135, 136, 137, 146, 147, 148, 158, 159
- W**
Webb, David 149, 150, 203



Lot 135



Lot 4

CONDITIONS OF SALE • BUYING AT CHRISTIE'S

CONDITIONS OF SALE

These Conditions of Sale and the Important Notices and Explanation of Cataloguing Practice set out the terms on which we offer the **lots** listed in this catalogue for sale. By registering to bid and/or by bidding at auction you agree to these terms, so you should read them carefully before doing so. You will find a glossary at the end explaining the meaning of the words and expressions coloured in **bold**.

Unless we own a **lot** (Δ symbol), Christie's acts as agent for the seller.

A BEFORE THE SALE

1 DESCRIPTION OF LOTS

(a) Certain words used in the catalogue description have special meanings. You can find details of these on the page headed 'Important Notices and Explanation of Cataloguing Practice' which forms part of these terms. You can find a key to the Symbols found next to certain catalogue entries under the section of the catalogue called 'Symbols Used in this Catalogue'.

(b) Our description of any **lot** in the catalogue, any **condition** report and any other statement made by us (whether orally or in writing) about any lot, including about its nature or **condition**, artist, period, materials, approximate dimensions or **provenance** are our opinion and not to be relied upon as a statement of fact. We do not carry out in-depth research of the sort carried out by professional historians and scholars. All dimensions and weights are approximate only.

2 OUR RESPONSIBILITY FOR OUR DESCRIPTION OF LOTS

We do not provide any guarantee in relation to the nature of a **lot** apart from our **authenticity warranty** contained in paragraph E2 and to the extent provided in paragraph I below.

3 CONDITION

(a) The **condition** of **lots** sold in our auctions can vary widely due to factors such as age, previous damage, restoration, repair and wear and tear. Their nature means that they will rarely be in perfect **condition**. **Lots** are sold 'as is', in the **condition** they are in at the time of the sale, without any representation or warranty or assumption of liability of any kind as to condition by Christie's or by the seller.

(b) Any reference to **condition** in a catalogue entry or in a **condition** report will not amount to a full description of **condition**, and images may not show a **lot** clearly. Colours and shades may look different in print or on screen to how they look on physical inspection. **Condition** reports may be available to help you evaluate the **condition** of a **lot**. **Condition** reports are provided free of charge as a convenience to our buyers and are for guidance only. They offer our opinion but they may not refer to all faults, inherent defects, restoration, alteration or adaptation because our staff are not professional restorers or conservators. For that reason they are not an alternative to examining a **lot** in person or taking your own professional advice. It is your responsibility to ensure that you have requested, received and considered any **condition** report.

4 VIEWING LOTS PRE-AUCTION

(a) If you are planning to bid on a **lot**, you should inspect it personally or through a knowledgeable representative before you make a bid to make sure that you accept the description and its **condition**. We recommend you get your own advice from a restorer or other professional adviser.

(b) Pre-auction viewings are open to the public free of charge. Our specialists may be available to answer questions at pre-auction viewings or by appointment.

5 ESTIMATES

Estimates are based on the **condition**, rarity, quality and **provenance** of the **lots** and on prices recently paid at auction for similar property. **Estimates** can change. Neither you, nor anyone else, may rely on any **estimates** as a prediction or guarantee of the actual selling price of a **lot** or its value for any other purpose. **Estimates** do not include the **buyer's premium** or any applicable taxes.

6 WITHDRAWAL

Christie's may, at its option, withdraw any **lot** at any time prior to or during the sale of the **lot**. Christie's has no liability to you for any decision to withdraw.

7 JEWELLERY

(a) Coloured gemstones (such as rubies, sapphires and emeralds) may have been treated to improve their look, through methods such as heating and oiling. These methods are accepted by the international jewellery trade but may make the gemstone less strong and/or require special care over time.

(b) All types of gemstones may have been improved by some method. You may request a gemmological report for any item which does not have a report if the request is made to us at least three weeks before the date of the auction and you pay the fee for the report.

(c) We do not obtain a gemmological report for every gemstone sold in our auctions. Where we do get gemmological reports from internationally accepted gemmological laboratories, such reports will be described in the catalogue. Reports from American gemmological laboratories will describe any improvement or treatment to the gemstone. Reports from European gemmological laboratories will describe any improvement or treatment only if we request that they do so, but will confirm when no improvement or treatment has been made. Because of differences in approach and technology, laboratories may not agree whether a particular gemstone has been treated, the amount of treatment or whether treatment is permanent. The gemmological laboratories will only report on the improvements or treatments known to the laboratories at the date of the report.

(d) For jewellery sales, **estimates** are based on the information in any gemmological report or, if no report is available, assume that the gemstones may have been treated or enhanced.

8 WATCHES & CLOCKS

(a) Almost all clocks and watches are repaired in their lifetime and may include parts which are not original. We do not give a **warranty** that any individual component part of any watch or clock is **authentic**. Watchbands described as 'associated' are not part of the original watch and may not be **authentic**. Clocks may be sold without pendulums, weights or keys.

(b) As collectors' watches and clocks often have very fine and complex mechanisms, a general service, change of battery or further repair work may be necessary, for which you are responsible. We do not give a **warranty** that any watch or clock is in good working order. Certificates are not available unless described in the catalogue.

(c) Most watches have been opened to find out the type and quality of movement. For that reason, watches with water resistant cases may not be waterproof and we recommend you have them checked by a competent watchmaker before use.

Important information about the sale, transport and shipping of watches and watchbands can be found in paragraph H2(g).

B REGISTERING TO BID

1 NEW BIDDERS

(a) If this is your first time bidding at Christie's or you are a returning bidder who has not bought anything from any of our salerooms within the last two years you must register at least 48 hours before an auction to give us enough time to process and approve your registration. We may, at our option, decline to permit you to register as a bidder. You will be asked for the following:

(i) for individuals: Photo identification (driving licence, national identity card or passport) and, if not shown on the ID document, proof of your current address (for example, a current utility bill or bank statement).

(ii) for corporate clients: Your Certificate of Incorporation or equivalent document(s) showing your name and registered address together with documentary proof of directors and beneficial owners; and

(iii) for trusts, partnerships, offshore companies and other business structures, please contact us in advance to discuss our requirements.

(b) We may also ask you to give us a financial reference and/or a deposit as a condition of allowing you to bid. For help, please contact our Credit Department on +44 (0)20 7839 9060.

2 RETURNING BIDDERS

We may at our option ask you for current identification as described in paragraph B1(a) above, a financial reference or a deposit as a condition of allowing you to bid. If you have not bought anything from any of our salerooms in the last two years or if you want to spend more than on previous occasions, please contact our Credit Department on +44 (0)20 7839 9060.

3 IF YOU FAIL TO PROVIDE THE RIGHT DOCUMENTS

If in our opinion you do not satisfy our bidder identification and registration procedures including, but not limited to completing any anti-money laundering and/or anti-terrorism financing checks we may require to our satisfaction, we may refuse to register you to bid, and if you make a successful bid, we may cancel the contract for sale between you and the seller.

4 BIDDING ON BEHALF OF ANOTHER PERSON

(a) **As authorised bidder.** If you are bidding on behalf of another person who will pay Christie's directly, that person will need to complete the registration requirements above before you can bid, and supply a signed letter authorising you to bid for him/her.

(b) **As agent for a principal:** If you register in your own name but are acting as agent for someone else (the 'ultimate buyer(s)') who will put you in funds before you pay us, you accept personal liability to pay the **purchase price** and all other sums due. We will require you to disclose the identity of the ultimate buyer(s) and may require you to provide documents to verify their identity in accordance with paragraph E3(b).

5 BIDDING IN PERSON

If you wish to bid in the saleroom you must register for a numbered bidding paddle at least 30 minutes before the auction. You may register online at www.christies.com or in person. For help, please contact the Credit Department on +44 (0)20 7839 9060.

6 BIDDING SERVICES

The bidding services described below are a free service offered as a convenience to our clients and Christie's is not responsible for any error (human or otherwise), omission or breakdown in providing these services.

(a) Phone Bids

Your request for this service must be made no later than 24 hours prior to the auction. We will accept bids by telephone for lots only if our staff are available to take the bids. If you need to bid in a language other than in English, you must arrange this well before the auction. We may record telephone bids. By bidding on the telephone, you are agreeing to us recording your conversations. You also agree that your telephone bids are governed by these Conditions of Sale.

(b) Internet Bids on Christie's Live™

For certain auctions we will accept bids over the Internet. For more information, please visit: <https://www.christies.com/buying-services/buying-guide/register-and-bid/>. As well as these Conditions of Sale, internet bids are governed by the Christie's LIVE™ Terms of Use which are available on <https://www.christies.com/LiveBidding/OnlineTermsOfUse.aspx>.

(c) Written Bids

You can find a Written Bid Form at the back of our catalogues, at any Christie's office or by choosing the sale and viewing the **lots** online at www.christies.com. We must receive your completed Written Bid Form at least 24 hours before the auction. Bids must be placed in the currency of the saleroom. The **auctioneer** will take reasonable steps to carry out written bids at the lowest possible price, taking into account the **reserve**. If you make a written bid on a **lot** which does not have a **reserve** and there is no higher bid than yours, we will bid on your behalf at around 50% of the **low estimate** or, if lower, the amount of your bid. If we receive written bids on a **lot** for identical amounts, and at the auction these are the highest bids on the **lot**, we will sell the **lot** to the bidder whose written bid we received first.

C CONDUCTING THE SALE

1 WHO CAN ENTER THE AUCTION

We may, at our option, refuse admission to our premises or decline to permit participation in any auction or to reject any bid.

2 RESERVES

Unless otherwise indicated, all **lots** are subject to a **reserve**. We identify **lots** that are offered without **reserve** with the symbol • next to the **lot** number. The reserve cannot be more than the **lot's low estimate**.

3 AUCTIONEER'S DISCRETION

The **auctioneer** can at his sole option:

- (a) refuse any bid;
- (b) move the bidding backwards or forwards in any way he or she may decide, or change the order of the **lots**;
- (c) withdraw any **lot**;
- (d) divide any **lot** or combine any two or more **lots**;
- (e) reopen or continue the bidding even after the hammer has fallen; and
- (f) in the case of error or dispute related to bidding and whether during or after the auction, to continue the bidding, determine the successful bidder, cancel the sale of the **lot**, or reoffer and resell any **lot**. If you believe that the **auctioneer** has accepted the successful bid in error, you must provide a written notice detailing your claim within 3 business days of the date of the auction. The **auctioneer** will consider such claim in good faith. If the **auctioneer**, in the exercise of his or her discretion under this paragraph, decides after the auction is complete, to cancel the sale of a **lot**, or reoffer and resell a **lot**, he or she will notify the successful bidder no later than by the end of the 7th calendar day following the date of the auction. The **auctioneer's** decision in exercise of this discretion is final. This paragraph does not in any way prejudice Christie's ability to cancel the sale of a **lot** under any other applicable provision of these Conditions of Sale, including the rights of cancellation set forth in section B(3), E(2)(i), F(4) and J(1).

4 BIDDING

The **auctioneer** accepts bids from:

- (a) bidders in the saleroom;
- (b) telephone bidders, and internet bidders through 'Christie's LIVE™' (as shown above in Section B6); and
- (c) written bids (also known as absentee bids or commission bids) left with us by a bidder before the auction.

5 BIDDING ON BEHALF OF THE SELLER

The **auctioneer** may, at his or her sole option, bid on behalf of the seller up to but not including the amount of the **reserve** either by making consecutive bids or by making bids in response to other bidders. The **auctioneer** will not identify these as bids made on behalf of the seller and will not make any bid on behalf of the seller at or above the **reserve**. If **lots** are offered without **reserve**, the **auctioneer** will generally decide to open the bidding at 50% of the **low estimate** for the **lot**. If no bid is made at that level, the **auctioneer** may decide to go backwards at his or her sole option until a bid is made, and then continue up from that amount. In the event that there are no bids on a **lot**, the **auctioneer** may deem such **lot** unsold.

6 BID INCREMENTS

Bidding generally starts below the **low estimate** and increases in steps (bid increments). The **auctioneer** will decide at his or her sole option where the bidding should start and the bid increments. The usual bid increments are shown for guidance only on the Written Bid Form at the back of this catalogue.

7 CURRENCY CONVERTER

The saleroom video screens (and Christie's LIVE™) may show bids in some other major currencies as well as sterling. Any conversion is for guidance only and we cannot be bound by any rate of exchange used. Christie's is not responsible for any error (human or otherwise), omission or breakdown in providing these services.

8 SUCCESSFUL BIDS

Unless the **auctioneer** decides to use his or her discretion as set out in paragraph C3 above, when the **auctioneer's** hammer strikes, we have accepted the last bid. This means a contract for sale has been formed between the seller and the successful bidder. We will issue an invoice only to the registered bidder who made the successful bid. While we send out invoices by post and/or email after the auction, we do not accept responsibility for telling you whether or not your bid was successful. If you have bid by written bid, you should contact us by telephone or in person as soon as possible after the auction to get details of the outcome of your bid to avoid having to pay unnecessary storage charges.

9 LOCAL BIDDING LAWS

You agree that when bidding in any of our sales that you will strictly comply with all local laws and regulations in force at the time of the sale for the relevant sale site.

D THE BUYER'S PREMIUM, TAXES AND ARTIST'S RESALE ROYALTY

1 THE BUYER'S PREMIUM

In addition to the **hammer price**, the successful bidder agrees to pay us a **buyer's premium** on the **hammer price** of each **lot** sold. On all **lots** we charge 25% of the **hammer price** up to and including £225,000, 20% on that part of the **hammer price** over £225,000 and up to and including £3,000,000, and 13.5% of that part of the **hammer price** above £3,000,000. VAT will be added to the **buyer's premium** and is payable by you. The VAT may not be shown separately on our invoice because of tax laws. You may be eligible to have a VAT refund in certain circumstances if the **lot** is exported. Please see the "VAT refunds: what can I reclaim?" section of 'VAT Symbols and Explanation' for further information.

2 TAXES

The successful bidder is responsible for all applicable tax including any VAT, sales or compensating use tax or equivalent tax wherever such taxes may arise on the **hammer price** and the **buyer's premium**. VAT charges and refunds depend on the particular circumstances of the buyer. It is the buyer's responsibility to ascertain and pay all taxes due. VAT is payable on the **buyer's premium** and, for some **lots**, VAT is payable on the **hammer price**. EU and UK VAT rules will apply on the date of the sale.

Brexit: If the UK withdraws from the EU without an agreed transition deal relating to the import or export of **property**, then UK VAT rules only will apply. If you purchased **lot** has not been shipped before the UK withdraws from the EU, your invoiced VAT position may retrospectively change and additional import tariffs may be due on your purchase if imported into the EU. Further information can be found in the 'VAT Symbols and Explanation' section of our catalogue.

For **lots** Christie's ships to the United States, sales or use tax may be due on the **hammer price, buyer's premium** and/or any other charges related to the **lot**, regardless of the nationality or citizenship of the purchaser. Christie's will collect sales tax where legally required. The applicable sales tax rate will be determined based upon the state, county, or locale to which the **lot** will be shipped. Successful bidders claiming an exemption from sales tax must provide appropriate documentation to Christie's prior to the release of the **lot**. For shipments to those states for which Christie's is not required to collect sales tax, a successful bidder may be required to remit use tax to that state's taxing authorities. Christie's recommends you obtain your own independent tax advice with further questions.

3 ARTIST'S RESALE ROYALTY

In certain countries, local laws entitle the artist or the artist's estate to a royalty known as 'artist's resale right' when any **lot** created by the artist is sold. We identify these **lots** with the symbol λ next to the **lot** number. If these laws apply to a **lot**, you must pay us an extra amount equal to the royalty. We will pay the royalty to the appropriate authority on the seller's behalf.

The artist's resale royalty applies if the **hammer price** of the **lot** is 1,000 euro or more. The total royalty for any **lot** cannot be more than 12,500 euro. We work out the amount owed as follows:

Royalty for the portion of the hammer price (in euros)

4% up to 50,000

3% between 50,000.01 and 200,000

1% between 200,000.01 and 350,000

0.50% between 350,000.01 and 500,000

over 500,000, the lower of 0.25% and 12,500 euro.

We will work out the artist's resale royalty using the euro to sterling rate of exchange of the European Central Bank on the day of the auction.

E WARRANTIES

1 SELLER'S WARRANTIES

For each **lot**, the seller gives a **warranty** that the seller:

(a) is the owner of the **lot** or a joint owner of the **lot** acting with the permission of the other co-owners or, if the seller is not the owner or a joint owner of the **lot**, has the permission of the owner to sell the **lot**, or the right to do so in law; and

(b) has the right to transfer ownership of the **lot** to the buyer without any restrictions or claims by anyone else.

If either of the above **warranties** are incorrect, the seller shall not have to pay more than the **purchase price** (as defined in paragraph F1(a) below) paid by you to us. The seller will not be responsible to you for any reason for loss of profits or business, expected savings, loss of opportunity or interest, costs, damages, **other damages** or expenses. The seller gives no **warranty** in relation to any **lot** other than as set out above and, as far as the seller is allowed by law, all **warranties** from the seller to you, and all other obligations upon the seller which may be added to this agreement by law, are excluded.

2 OUR AUTHENTICITY WARRANTY

We warrant, subject to the terms below, that the **lots** in our sales are authentic (our '**authenticity warranty**'). If, within five years of the date of the auction, you give notice to us that your **lot** is not **authentic**, subject to the terms below, we will refund the **purchase price** paid by you. The meaning of **authentic** can be found in the glossary at the end of these Conditions of Sale. The terms of the **authenticity warranty** are as follows:

(a) It will be honoured for claims notified within a period of five years from the date of the auction. After such time, we will not be obligated to honour the **authenticity warranty**.

(b) It is given only for information shown in **UPPERCASE type** in the first line of the **catalogue description** (the '**Heading**'). It does not apply to any information other than in the **Heading** even if shown in **UPPERCASE type**.

(c) The **authenticity warranty** does not apply to any **Heading** or part of a **Heading** which is **qualified**. **Qualified** means limited by a clarification in a **lot's catalogue description** or by the use in a **Heading** of one of the terms listed in the section titled **Qualified Headings** on the page of the catalogue headed 'Important Notices and Explanation of Cataloguing Practice'. For example, use of the term 'ATTRIBUTED TO...' in a **Heading** means that the **lot** is in Christie's opinion probably a work by the named artist but no **warranty** is provided that the **lot** is the work of the named artist. Please read the full list of **Qualified Headings** and a **lot's full catalogue description** before bidding.

(d) The **authenticity warranty** applies to the **Heading** as amended by any **Saleroom Notice**.

(e) The **authenticity warranty** does not apply where scholarship has developed since the auction leading to a change in generally accepted opinion. Further, it does not apply if the **Heading** either matched the generally accepted opinion of experts at the date of the sale or drew attention to any conflict of opinion.

(f) The **authenticity warranty** does not apply if the **lot** can only be shown not to be **authentic** by a scientific process which, on the date we published the catalogue, was not available or generally accepted for use, or which was unreasonably expensive or impractical, or which was likely to have damaged the **lot**.

(g) The benefit of the **authenticity warranty** is only available to the original buyer shown on the invoice for the **lot** issued at the time of the sale and only if, on the date of the notice of claim, the original buyer is the full owner of the **lot** and the **lot** is free from any claim, interest or restriction by anyone else. The benefit of this **authenticity warranty** may not be transferred to anyone else.

(h) In order to claim under the **authenticity warranty**, you must:

(i) give us written notice of your claim within five years of the date of the auction. We may require full details and supporting evidence of any such claim;

(ii) at Christie's option, we may require you to provide the written opinions of two recognised experts in the field of the **lot** mutually agreed by you and us in advance confirming that the **lot** is not **authentic**. If we have any doubts, we reserve the right to obtain additional opinions at our expense; and

(iii) return the **lot** at your expense to the saleroom from which you bought it in the **condition** it was in at the time of sale.

(i) Your only right under this **authenticity warranty** is to cancel the sale and receive a refund of the **purchase price** paid by you to us. We will not, in any circumstances, be required to pay you more than the **purchase price** nor will we be liable for any loss of profits or business, loss of opportunity or value, expected savings or interest, costs, damages, **other damages** or expenses.

(j) **Books**. Where the **lot** is a book, we give an additional **warranty** for 14 days from the date of the sale that if on collation any **lot** is defective in text or illustration, we will refund your **purchase price**, subject to the following terms:

(a) This additional **warranty** does not apply to:

(i) the absence of blanks, half titles, tissue guards or advertisements, damage in respect of bindings, stains, spotting, marginal tears or other defects not affecting completeness of the text or illustration;

(ii) drawings, autographs, letters or manuscripts, signed photographs, music, atlases, maps or periodicals;

(iii) books not identified by title;

(iv) **lots** sold without a printed **estimate**;

(v) books which are described in the catalogue as sold not subject to return; or

(vi) defects stated in any **condition** report or announced at the time of sale.

(b) To make a claim under this paragraph you must give written details of the defect and return the **lot** to the sale room at which you bought it in the same **condition** as at the time of sale, within 14 days of the date of the sale.

(k) **South East Asian Modern and Contemporary Art and Chinese Calligraphy and Painting**.

In these categories, the **authenticity warranty** does not apply because current scholarship does not permit the making of definitive statements. Christie's does, however, agree to cancel a sale in either of these two categories of art where it has been proven the **lot** is a forgery. Christie's will refund to the original buyer the purchase price in accordance with the terms of Christie's authenticity warranty, provided that the original buyer notifies us with full supporting evidence documenting the forgery claim within twelve (12) months of the date of the auction. Such evidence must be satisfactory to us that the lot is a forgery in accordance with paragraph E2(h)(ii) above and the **lot** must be returned to us in accordance with E2(h)(iii) above. Paragraphs E2(b), (c), (d), (e), (f) and (g) and (i) also apply to a claim under these categories.

(l) **Chinese, Japanese and Korean artefacts (excluding Chinese, Japanese and Korean calligraphy, paintings, prints, drawings and jewellery)**.

In these categories, paragraph E2 (b) - (e) above shall be amended so that where no maker or artist is identified, the **authenticity warranty** is given not only for the **Heading** but also for information regarding date or period shown in **UPPERCASE type** in the second line of the **catalogue description** (the '**Subheading**'). Accordingly, all references to the **Heading** in paragraph E2 (b) - (e) above shall be read as references to both the **Heading** and the **Subheading**.

3 YOUR WARRANTIES

(a) You **warrant** that the funds used for settlement are not connected with any criminal activity, including tax evasion, and you are neither under investigation, nor have you been charged with or convicted of money laundering, terrorist activities or other crimes.

(b) where you are bidding as agent on behalf of any ultimate buyer(s) who will put you in funds before you pay Christie's for the **lot(s)**, you **warrant** that:

(i) you have conducted appropriate customer due diligence on the ultimate buyer(s) and have complied with all applicable anti-money laundering, counter terrorist financing and sanctions laws;

(ii) you will disclose to us the identity of the ultimate buyer(s) (including any officers and beneficial owner(s) of the ultimate buyer(s) and any persons acting on its behalf) and on our request, provide documents to verify their identity;

(iii) the arrangements between you and the ultimate buyer(s) in relation to the **lot** or otherwise do not, in whole or in part, facilitate tax crimes;

(iv) you do not know, and have no reason to suspect that the ultimate buyer(s) (or its officers, beneficial owners or any persons acting on its behalf) are on a sanctions list, are under investigation for, charged with or convicted of money laundering, terrorist activities or other crimes, or that the funds used for settlement are connected with the proceeds of any criminal activity, including tax evasion; and

(v) where you are a regulated person who is supervised for anti-money laundering purposes under the laws of the EEA or another jurisdiction with requirements equivalent to the EU 4th Money Laundering Directive, and we do not request documents to verify the ultimate buyer's identity at the time of registration, you consent to us relying on your due diligence on the ultimate buyer, and will retain their identification and verification documents for a period of not less than 5 years from the date of the transaction. You will make such documentation available for immediate inspection on our request.

F PAYMENT

1 HOW TO PAY

(a) Immediately following the auction, you must pay the **purchase price** being:

(i) the **hammer price**; and

(ii) the **buyer's premium**; and

(iii) any amounts due under section D3 above; and

(iv) any duties, goods, sales, use, compensating or service tax or VAT. Payment is due no later than by the end of the seventh calendar day following the date of the auction (the '**due date**').

(b) We will only accept payment from the registered bidder. Once issued, we cannot change the buyer's name on an invoice or re-issue the invoice in a different name. You must pay immediately even if you want to export the **lot** and you need an export licence.

(c) You must pay for **lots** bought at Christie's in the United Kingdom in the currency stated on the invoice in one of the following ways:

(i) Wire transfer

You must make payments to:

Lloyds Bank Plc, City Office, PO Box 217, 72 Lombard Street, London EC3P 3BT. Account number: 00172710, sort code: 30-00-02 Swift code: LOYDGB2LCTY. IBAN (international bank account number): GB81 LOYD 3000 0200 1727 10.

(ii) Credit Card.

We accept most major credit cards subject to certain conditions. You may make payment via credit card in person. You may also make a 'cardholder not present' (CNP) payment by calling Christie's Post-Sale Services Department on +44 (0)20 7752 3200 or for some sales, by logging into your MyChristie's account by going to: www.christies.com/mychristies. Details of the conditions and restrictions applicable to credit card payments are available from our Post-Sale Services Department, whose details are set out in paragraph (e) below.

If you pay for your purchase using a credit card issued outside the region of the sale, depending on the type of credit card and account you hold, the payment may incur a cross-border transaction fee. If you think this may apply to you, please check with your credit card issuer before making the payment.

Please note that for sales that permit online payment, certain transactions will be ineligible for credit card payment.

(iii) Cash

We accept cash subject to a maximum of £5,000 per buyer per year at our Cashier's Department only (subject to conditions).

(iv) Banker's draft

You must make these payable to Christie's and there may be conditions.

(v) Cheque

You must make cheques payable to Christie's. Cheques must be from accounts in pounds sterling from a United Kingdom bank.

(d) You must quote the sale number, lot number(s), your invoice number and Christie's client account number when making a payment. All payments sent by post must be sent to: Christie's, Cashiers Department, 8 King Street, St James's, London, SW1Y 6QT.

(e) For more information please contact our Post-Sale Service Department by phone on +44 (0)20 7752 3200 or fax on +44 (0)20 752 3300.

2. TRANSFERRING OWNERSHIP TO YOU

You will not own the **lot** and ownership of the **lot** will not pass to you until we have received full and clear payment of the **purchase price**, even in circumstances where we have released the **lot** to the buyer.

3 TRANSFERRING RISK TO YOU

The risk in and responsibility for the **lot** will transfer to you from whichever is the earlier of the following:

(a) When you collect the **lot**; or

(b) At the end of the 30th day following the date of the auction or, if earlier, the date the **lot** is taken into care by a third party warehouse as set out on the page headed 'Storage and Collection', unless we have agreed otherwise with you in writing.

4 WHAT HAPPENS IF YOU DO NOT PAY

(a) If you fail to pay us the **purchase price** in full by the **due date**, we will be entitled to do one or more of the following (as well as enforce our rights under paragraph F5 and any other rights or remedies we have by law):

(i) to charge interest from the **due date** at a rate of 5% a year above the UK Lloyds Bank base rate from time to time on the unpaid amount due;

(ii) we can cancel the sale of the **lot**. If we do this, we may sell the **lot** again, publicly or privately on such terms we shall think necessary or appropriate, in which case you must pay us any shortfall between the **purchase price** and the proceeds from the resale. You must also pay all costs, expenses, losses, damages and legal fees we have to pay or may suffer and any shortfall in the seller's commission on the resale;

(iii) we can pay the seller an amount up to the net proceeds payable in respect of the amount bid by your default in which case you acknowledge and understand that Christie's will have all of the rights of the seller to pursue you for such amounts;

(iv) we can hold you legally responsible for the **purchase price** and may begin legal proceedings to recover it together with other losses, interest, legal fees and costs as far as we are allowed by law;

(v) we can take what you owe us from any amounts which we or any company in the **Christie's Group** may owe you (including any deposit or other part-payment which you have paid to us);

(vi) we can, at our option, reveal your identity and contact details to the seller;

(vii) we can reject at any future auction any bids made by or on behalf of the buyer or to obtain a deposit from the buyer before accepting any bids;

(viii) to exercise all the rights and remedies of a person holding security over any property in our possession owned by you, whether by way of pledge, security interest or in any other way as permitted by the law of the place where such property is located. You will be deemed to have granted such security to us and we may retain such property as collateral security for your obligations to us; and

(ix) we can take any other action we see necessary or appropriate.

(b) If you owe money to us or to another **Christie's Group** company, we can use any amount you do pay, including any deposit or other part-payment you have made to us, or which we owe you, to pay off any amount you owe to us or another **Christie's Group** company for any transaction.

(c) If you make payment in full after the **due date**, and we choose to accept such payment we may charge you storage and transport costs from the date that is 30 calendar days following the auction in accordance with paragraphs Gd(i) and (ii). In such circumstances paragraph Gd(iv) shall apply.

5 KEEPING YOUR PROPERTY

If you owe money to us or to another **Christie's Group** company, as well as the rights set out in F4 above, we can use or deal with any of your property we hold or which is held by another **Christie's Group** company in any way we are allowed to by law. We will only release your property to you after you pay us or the relevant **Christie's Group** company in full for what you owe.

However, if we choose, we can also sell your property in any way we think appropriate. We will use the proceeds of the sale against any amounts you owe us and we will pay any amount left from that sale to you. If there is a shortfall, you must pay us any difference between the amount we have received from the sale and the amount you owe us.

G COLLECTION AND STORAGE

(a) You must collect purchased **lots** within thirty days from the auction (**but note that lots will not be released to you until you have made full and clear payment of all amounts due to us**).

(b) Information on collecting **lots** is set out on the Storage and Collection page and on an information sheet which you can get from the bidder registration staff or Christie's Post-Sale Services Department on +44 (0)20 7752 3200.

(c) If you do not collect any **lot** within thirty days following the auction we can, at our option:

(i) charge you storage costs at the rates set out at www.christies.com/storage.

(ii) move the **lot** to another Christie's location or an affiliate or third party warehouse and charge you transport costs and administration fees for doing so and you will be subject to the third party storage warehouse's standard terms and to pay for their standard fees and costs.

(iii) sell the **lot** in any commercially reasonable way we think appropriate.

(d) The Storage Conditions which can be found at www.christies.com/storage will apply.

H TRANSPORT AND SHIPPING

1 TRANSPORT AND SHIPPING

We will enclose a transport and shipping form with each invoice sent to you. You must make all transport and shipping arrangements. However, we can arrange to pack, transport and ship your property if you ask us to and pay the costs of doing so. We recommend that you ask us for an **estimate**, especially for any large items or items of high value that need professional packing before you bid. We may also suggest other handlers, packers, transporters or experts if you ask us to do so. For more information, please contact Christie's Art Transport on +44 (0)20 7839 9060. See the information set out at www.christies.com/shipping or contact us at arttransport_london@christies.com. We will take reasonable care when we are handling, packing, transporting and shipping a **lot**. However, if we recommend another company for any of these purposes, we are not responsible for their acts, failure to act or neglect.

2 EXPORT AND IMPORT

Any lot sold at auction may be affected by laws on exports from the country in which it is sold and the import restrictions of other countries. Many countries require a declaration of export for property leaving the country and/or an import declaration on entry of property into the country. Local laws may prevent you from importing a lot or may prevent you selling a lot in the country you import it into. We will not be obliged to cancel your purchase and refund the **purchase price** if your **lot** may not be exported, imported or it is seized for any reason by a government authority. It is your responsibility to determine and satisfy the requirements of any applicable laws or regulations relating to the export or import of any **lot** you purchase.

(a) You alone are responsible for getting advice about and meeting the requirements of any laws or regulations which apply to exporting or importing any **lot** prior to bidding. If you are refused a licence or there is a delay in getting one, you must still pay us in full for the **lot**. We may be able to help you apply for the appropriate licences if you ask us to and pay our fee for doing so. However, we cannot guarantee that you will get one.

For more information, please contact Christie's Art Transport Department on +44 (0)20 7839 9060. See the information set out at www.christies.com/shipping or contact us at arttransport_london@christies.com.

(b) You alone are responsible for any applicable taxes, tariffs or other government-imposed charges relating to the export or import of the **lot**. If Christie's exports or imports the **lot** on your behalf, and if Christie's pays these applicable taxes, tariffs or other government-imposed charges, you agree to refund that amount to Christie's.

(c) **Lots made of protected species**

Lots made of or including (regardless of the percentage) endangered and other protected species of wildlife are marked with the symbol - in the catalogue. This material includes, among other things, ivory, tortoiseshell, crocodile skin, rhinoceros horn, whalebone, certain species of coral, and Brazilian rosewood. You should check the relevant customs laws and regulations before bidding on any **lot** containing wildlife material if you plan to import the **lot** into another country. Several countries refuse to allow you to import property containing these materials, and some other countries require a licence from the relevant regulatory agencies in the countries of exportation as well as importation. In some cases, the **lot** can only be shipped with an independent scientific confirmation of species and/or age and you will need to obtain these at your own cost. If a **lot** contains elephant ivory, or any other wildlife material that could be confused with elephant ivory (for example, mammoth ivory, walrus ivory, helmeted hornbill ivory), please see further important information in paragraph (c) if you are proposing to import the **lot** into the USA. We will not be obliged to cancel your purchase and refund the **purchase price** if your **lot** may not be exported, imported or it is seized for any reason by a government authority. It is your responsibility to determine and satisfy the requirements of any applicable laws or regulations relating to the export or import of property containing such protected or regulated material.

(d) **US import ban on African elephant ivory**

The USA prohibits the import of ivory from the African elephant. Any **lot** containing elephant ivory or other wildlife material that could be easily confused with elephant ivory (for example, mammoth ivory, walrus ivory, helmeted hornbill ivory) can only be imported into the US with results of a rigorous scientific test acceptable to Fish & Wildlife, which confirms that the material is not African elephant ivory. Where we have conducted such rigorous scientific testing on a **lot** prior to sale, we will make this clear in the lot description. In

all other cases, we cannot confirm whether a **lot** contains African elephant ivory, and you will buy that **lot** at your own risk and be responsible for any scientific test or other reports required for import into the USA at your own cost. If such scientific test is inconclusive or confirms the material is from the African elephant, we will not be obliged to cancel your purchase and refund the **purchase price**.

(e) **Lots of Iranian origin**

Some countries prohibit or restrict the purchase and/or import of Iranian-origin 'works of conventional craftsmanship' (works that are not by a recognised artist and/or that have a function, for example: carpets, bowls, ewers, tiles, ornamental boxes). For example, the USA prohibits the import of this type of property and its purchase by US persons (wherever located). Other countries only permit the import of this property in certain circumstances. As a convenience to buyers, Christie's indicates under the title of a **lot** if the **lot** originates from Iran (Persia). It is your responsibility to ensure you do not bid on or import a **lot** in contravention of the sanctions or trade embargoes that apply to you.

(f) **Gold**

Gold of less than 18ct does not qualify in all countries as 'gold' and may be refused import into those countries as 'gold'.

(g) **Jewellery over 50 years old**

Under current laws, jewellery over 50 years old which is worth £39,219 or more will require an export licence which we can apply for on your behalf. It may take up to eight weeks to obtain the export jewellery licence.

(h) **Watches**

Many of the watches offered for sale in this catalogue are pictured with straps made of endangered or protected animal materials such as alligator or crocodile. These lots are marked with the symbol ♡ in the catalogue. These endangered species straps are shown for display purposes only and are not for sale. Christie's will remove and retain the strap prior to shipment from the sale site. At some sale sites, Christie's may, at its discretion, make the displayed endangered species strap available to the buyer of the **lot** free of charge if collected in person from the sale site within one year of the date of the sale. Please check with the department for details on a particular **lot**.

For all symbols and other markings referred to in paragraph H2, please note that **lots** are marked as a convenience to you, but we do not accept liability for errors or for failing to mark **lots**.

I OUR LIABILITY TO YOU

(a) We give no **warranty** in relation to any statement made, or information given, by us or our representatives or employees, about any **lot** other than as set out in the **authenticity warranty** and, as far as we are allowed by law, all **warranties** and other terms which may be added to this agreement by law are excluded. The seller's **warranties** contained in paragraph E1 are their own and we do not have any liability to you in relation to those **warranties**.

(b) (i) We are not responsible to you for any reason (whether for breaking this agreement or any other matter relating to your purchase of, or bid for, any **lot**) other than in the event of fraud or fraudulent misrepresentation by us other than as expressly set out in these Conditions of Sale; or

(ii) We do not give any representation, **warranty** or guarantee or assume any liability of any kind in respect of any **lot** with regard to merchantability, fitness for a particular purpose, description, size, quality, condition, attribution, authenticity, rarity, importance, medium, provenance, exhibition history, literature, or historical relevance. Except as required by local law, any **warranty** of any kind is excluded by this paragraph.

(c) In particular, please be aware that our written and telephone bidding services, Christie's 'LIVE™', **condition** reports, currency converter and saleroom video screens are free services and we are not responsible to you for any error (human or otherwise), omission or breakdown in these services.

(d) We have no responsibility to any person other than a buyer in connection with the purchase of any **lot**.

(e) If, in spite of the terms in paragraphs (a) to (d) or E2(i) above, we are found to be liable to you for any reason, we shall not have to pay more than the **purchase price** paid by you to us. We will not be responsible to you for any reason for loss of profits or business, loss of opportunity or value, expected savings or interest, costs, damages, or expenses.

J OTHER TERMS

1 OUR ABILITY TO CANCEL

In addition to the other rights of cancellation contained in this agreement, we can cancel a sale of a **lot** if: (i) any of your warranties in paragraph E3 are not correct; (ii) we reasonably believe that completing the transaction is or may be unlawful; or (iii) we reasonably believe that the sale places us or the seller under any liability to anyone else or may damage our reputation.

2 RECORDINGS

We may videotape and record proceedings at any auction. We will keep any personal information confidential, except to the extent disclosure is required by law. However, we may, through this process, use or share these recordings with another **Christie's Group** company and marketing partners to analyse our customers and to help us to tailor our services for buyers. If you do not want to be videotaped, you may make arrangements to make a telephone or written bid or bid on Christie's 'LIVE™' instead. Unless we agree otherwise in writing, you may not videotape or record proceedings at any auction.

3 COPYRIGHT

We own the copyright in all images, illustrations and written material produced by or for us relating to a **lot** (including the contents of our catalogues unless otherwise noted in the catalogue). You cannot use them without our prior written permission. We do not offer any guarantee that you will gain any copyright or other reproduction rights to the **lot**.

4 ENFORCING THIS AGREEMENT

If a court finds that any part of this agreement is not valid or is illegal or impossible to enforce, that part of the agreement will be treated as being deleted and the rest of this agreement will not be affected.

5 TRANSFERRING YOUR RIGHTS AND RESPONSIBILITIES

You may not grant a security over or transfer your rights or responsibilities under these terms on the contract of sale with the buyer unless we have given our written permission. This agreement will be binding on your successors or estate and anyone who takes over your rights and responsibilities.

6 TRANSLATIONS

If we have provided a translation of this agreement, we will use this original version in deciding any issues or disputes which arise under this agreement.

7 PERSONAL INFORMATION

We will hold and process your personal information and may pass it to another **Christie's Group** company for use as described in, and in line with, our privacy notice at www.christies.com/about-us/contact/privacy and if you are a resident of California you can see a copy of our California Consumer Privacy Act statement at <https://www.christies.com/about-us/contact/ccpa>.

8 WAIVER

No failure or delay to exercise any right or remedy provided under these Conditions of Sale shall constitute a waiver of that or any other right or remedy, nor shall it prevent or restrict the further exercise of that or any other right or remedy. No single or partial exercise of such right or remedy shall prevent or restrict the further exercise of that or any other right or remedy.

9 LAW AND DISPUTES

This agreement, and any contractual or non-contractual dispute arising out of or in connection with this agreement, will be governed by English law. Before either you or we start any court proceedings and if you and we agree, you and we will try to settle the dispute by mediation in accordance with the CEDR Model Mediation Procedure. If the dispute is not settled by mediation, you agree for our benefit that the dispute will be referred to and dealt with exclusively in the English courts; however, we will have the right to bring proceedings against you in any other court.

10 REPORTING ON WWW.CHRISTIES.COM

Details of all **lots** sold by us, including **catalogue descriptions** and prices, may be reported on www.christies.com. Sales totals are **hammer price plus buyer's premium** and do not reflect costs, financing fees, or application of buyer's or seller's credits. We regret that we cannot agree to requests to remove these details from www.christies.com.

K GLOSSARY

auctioneer: the individual **auctioneer** and/or Christie's.

authentic: a genuine example, rather than a copy or forgery of:

(i) the work of a particular artist, author or manufacturer, if the **lot** is described in the **Heading** as the work of that artist, author or manufacturer;

(ii) a work created within a particular period or culture, if the **lot** is described in the **Heading** as a work created during that period or culture;

(iii) a work for a particular origin source if the **lot** is described in the **Heading** as being of that origin or source; or

(iv) in the case of gems, a work which is made of a particular material, if the **lot** is described in the **Heading** as being made of that material.

authenticity warranty: the guarantee we give in this agreement that a **lot** is **authentic** as set out in section E2 of this agreement.

buyer's premium: the charge the buyer pays us along with the **hammer price**.

catalogue description: the description of a **lot** in the catalogue for the auction, as amended by any saleroom notice.

Christie's Group: Christie's International Plc, its subsidiaries and other companies within its corporate group.

condition: the physical **condition** of a **lot**.

due date: has the meaning given to it in paragraph F1(a).

estimate: the price range included in the catalogue or any saleroom notice within which we believe a **lot** may sell. **Low estimate** means the lower figure in the range and **high estimate** means the higher figure. The **mid estimate** is the midpoint between the two.

hammer price: the amount of the highest bid the **auctioneer** accepts for the sale of a **lot**.

Heading: has the meaning given to it in paragraph E2.

Subheading: has the meaning given to it in paragraph E2.

lot: an item to be offered at auction (or two or more items to be offered at auction as a group).

other damages: any special, consequential, incidental or indirect damages of any kind or any damages which fall within the meaning of 'special', 'incidental' or 'consequential' under local law.

purchase price: has the meaning given to it in paragraph F1(a).

provenance: the ownership history of a **lot**.

qualified: has the meaning given to it in paragraph E2 and **Qualified Headings** means the section headed **Qualified Headings** on the page of the catalogue headed 'Important Notices and Explanation of Cataloguing Practice'.

reserve: the confidential amount below which we will not sell a **lot**.

saleroom notice: a written notice posted next to the **lot** in the saleroom and on www.christies.com, which is also read to prospective telephone bidders and notified to clients who have left commission bids, or an announcement made by the **auctioneer** either at the beginning of the sale, or before a particular lot is auctioned.

UPPER CASE type: means having all capital letters.

warranty: a statement or representation in which the person making it guarantees that the facts set out in it are correct.

CONVERSION CHART

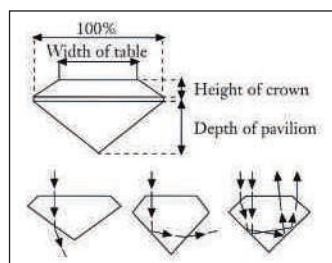
Ring Size

Measurements

AMERICAN	FRENCH/ JAPANESE	ENGLISH	METRIC	INCHES	CM
1/2		A	37.8252		
3/4	—	A 1/2	38.4237		
1	—	B	39.0222	—	1
1 1/4	—	B 1/2	39.6207		
1 1/2	—	C	40.2192		2
1 3/4	—	C 1/2	40.8177		
2	—	D	41.4162	1	
2 1/4	1	D 1/2	42.0147		3
2 1/2	2	E	42.6132		
2 3/4	—	E 1/2	43.2117	—	4
3	3	F	43.8102		
3 1/4	4	F 1/2	44.4087		
3 1/4	—	G	45.0072	2	5
3 1/2	5	G 1/2	45.6057		
3 3/4	—	H	46.2042		
4	6	H 1/2	46.8027	—	6
4 1/4	—	I	47.4012		
4 1/2	7	I 1/2	47.9997		7
4 3/4	8	J	48.5982		
5	—	J 1/2	49.1967	3	
5 1/4	9	K	49.7952		8
5 1/2	10	K 1/2	50.3937		
5 3/4	—	L	50.9922	—	9
6	11	L 1/2	51.5907		
6 1/4	—	M	52.1892		
6 1/2	12	M 1/2	52.7877	4	10
6 3/4	13	N	53.4660		
7	—	N 1/2	54.1044		11
7	14	O	54.7428	—	
7 1/4	15	O 1/2	55.3812		
7 1/2	—	P	56.0196		12
7 3/4	16	P 1/2	56.6580		
8	—	Q	57.2964	5	
8 1/4	17	Q 1/2	57.9348		13
8 1/2	18	R	58.5732		
8 3/4	—	R 1/2	59.2116	—	14
9	19	S	59.8500		
9 1/4	20	S 1/2	60.4884		
9 1/2	—	T	61.1268	6	15
9 3/4	21	T 1/2	61.7652		
10	22	U	62.4026		16
10 1/4	—	U 1/2	63.0420	—	
10 1/2	23	V	63.6804		
10 3/4	24	V 1/2	64.3188		17
11	—	W	64.8774		
11 1/4	25	W 1/2	65.4759	7	
11 1/2	—	X	66.0744		18
11 3/4	26	X 1/2	66.6729		
12	—	Y	67.2714		
12 1/4	—	Y 1/2	67.8699		
12 1/2	—	Z	68.4684		

DIAMONDS • THE 4 C'S

Cut



Round
Brilliant



Oval



Marquise



Pear

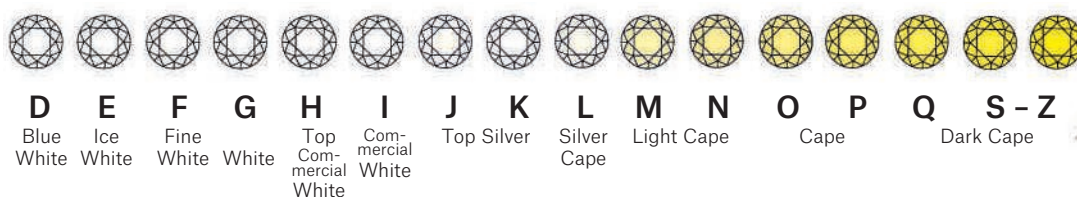


Heart

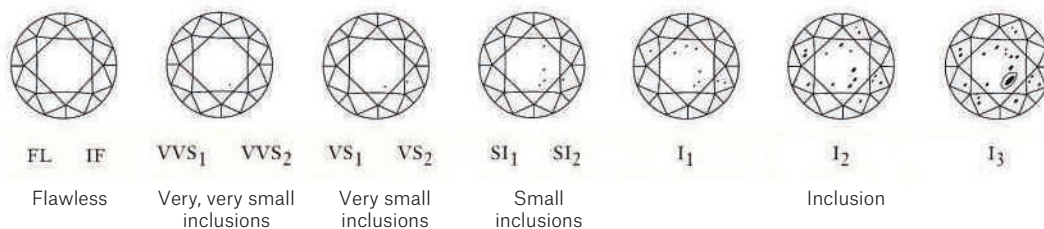


Emerald

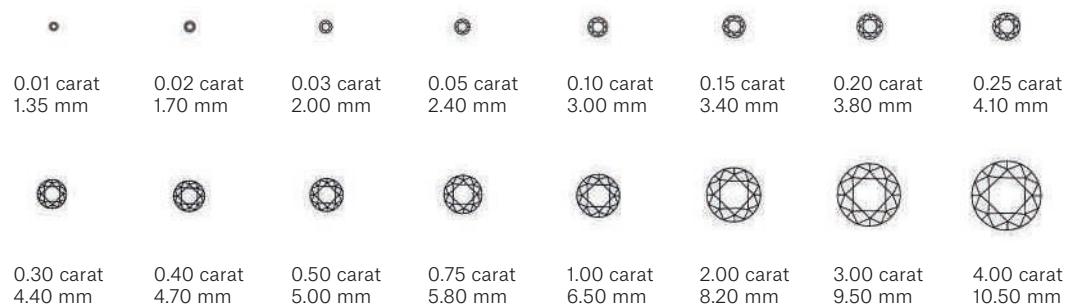
Colour (G.I.A.)



Clarity (G.I.A.)



Carat



Courtesy of Jewellers Network, the Southern African Jewellery Trade Directory, from information supplied by De Beers.
www.jewellersnetwork.co.za

COLOURLESS DIAMOND INDEX

LOT	CT WEIGHT	COLOUR	CLARITY	CUT
212	5.49	D	IF	Rectangular
125	1.02	G	VS1	Pear
221	2.71	G	VS1	Pear
151	0.72	G	VVS2	Round
221	3.11	H	SI1	Pear
221	0.89	J	I1	Round
221	0.84	J	I1	Round
164	4.51	J	VS1	Cushion
89	4.59	K (faint brown)	VVS2	Cushion
209	9.67	Q-R	VS2	Round
209	10.26	S-T	VVS2	Round
155	3.02	U-V	VVS1	Rectangular
155	3.53	Y-Z	VS2	Rectangular



Lot 83

COLOURED DIAMOND INDEX

LOT	CT WEIGHT	COLOUR	CLARITY	CUT
3	5.02	Fancy Brown Yellow	I1	Rose
42	4.00	Fancy Light Yellow	VVS1	Rectangular
42	4.06	Fancy Light Yellow	VVS2	Rectangular
24	10.58	Fancy Yellow-Brown		Pear
122	2.50	Fancy Yellow		Round
156	0.25	Fancy Deep Orangy Yellow		Round
156	0.22	Fancy Deep Orangy Yellow		Round
156	0.21	Fancy Deep Orangy Yellow		Round
156	0.19	Fancy Deep Orangy Yellow		Round
156	0.18	Fancy Deep Orangy Yellow		Round
156	0.16	Fancy Deep Orangy Yellow		Round

COLOURED STONE INDEX

SAPPHIRE

LOT	CT WEIGHT	ORIGIN	TREATMENT	CUT
94	2.8	Kashmir	None	AGL
94	2.8	Kashmir	None	SSEF
223	9.11	Kashmir	None	SSEF
223	9.11	Kashmir	None	AGL
223	9.11	Kashmir	None	Gübelin
128	4.02	Burma	None	Gübelin
18	6.8	Ceylon	Minor oil	SSEF
118	4.53	Ceylon	None	SSEF
204	8.98	Ceylon	None	AGL
140	10.04	Sri Lanka	None	GRS

RUBY

LOT	CT WEIGHT	ORIGIN	TREATMENT	CUT
196	4.00	Burma	None	Gübelin
130	2.19	Burma	None	GRS
214		Burma	None	AGL
215		Burma	None	Gem & Pearl Laboratory

EMERALD

LOT	CT WEIGHT	ORIGIN	TREATMENT	CUT
165	2.29	Colombia	None	Square
211	4.60	Colombia	None	Step
163	13.55	Colombia	Minor	Pear
200	6.62	Colombia	Minor	Cabochon
205	8.25	Colombia	Minor	Oval
222	10.34	Colombia	Minor	Rectangular
222		Colombia	Moderate	Rectangular

VAT SYMBOLS AND EXPLANATION

IMPORTANT NOTICE:

The VAT liability in force on the date of the sale will be the rules under which we invoice you.

BREXIT: If the UK withdraws from the EU without an agreed transition deal relating to the import and export of property, your invoiced VAT position may retrospectively change and additional import tariffs may be due if you import your purchase into the EU. Christie's is unable to provide tax or financial advice to you and recommends you obtain your own independent tax advice.

You can find a glossary explaining the meanings of words coloured in bold on this page at the end of the section of the catalogue headed 'Conditions of Sale' VAT payable

Symbol	
No Symbol	We will use the VAT Margin Scheme. No VAT will be charged on the hammer price . VAT at 20% will be added to the buyer's premium but will not be shown separately on our invoice.
† ø	We will invoice under standard VAT rules and VAT will be charged at 20% on both the hammer price and buyer's premium and shown separately on our invoice. For qualifying books only, no VAT is payable on the hammer price or the buyer's premium .
*	These lots have been imported from outside the EU or, if the UK has withdrawn from the EU without an agreed transition deal, from outside of the UK for sale and placed under the Temporary Admission regime. Import VAT is payable at 5% on the hammer price . VAT at 20% will be added to the buyer's premium but will not be shown separately on our invoice.
Ω	These lots have been imported from outside the EU or, if the UK has withdrawn from the EU without an agreed transition deal, from outside of the UK for sale and placed under the Temporary Admission regime. Customs Duty as applicable will be added to the hammer price and Import VAT at 20% will be charged on the Duty Inclusive hammer price . VAT at 20% will be added to the buyer's premium but will not be shown separately on our invoice.
α	The VAT treatment will depend on whether you have registered to bid with an EU address or, if the UK has withdrawn from the EU without an agreed transition deal, a UK address or non-EU address: <ul style="list-style-type: none">• If you register to bid with an address within the EU or UK (as applicable above) you will be invoiced under the VAT Margin Scheme (see No Symbol above).• If you register to bid with an address outside of the EU or UK (as applicable above) you will be invoiced under standard VAT rules (see † symbol above)
‡	For wine offered 'in bond' only. If you choose to buy the wine in bond no Excise Duty or Clearance VAT will be charged on the hammer . If you choose to buy the wine out of bond Excise Duty as applicable will be added to the hammer price and Clearance VAT at 20% will be charged on the Duty inclusive hammer price . Whether you buy the wine in bond or out of bond, 20% VAT will be added to the buyer's premium and shown on the invoice.

VAT refunds: what can I reclaim? If you are:

Non-VAT registered UK buyer or Non-VAT registered EU buyer (please refer to the below category if you are a Non-VAT registered EU buyer and the UK has withdrawn from the EU without an agreed transition deal)		No VAT refund is possible
UK VAT registered buyer	No symbol and α	The VAT amount in the buyer's premium cannot be refunded. However, on request we can re-invoice you outside of the VAT Margin Scheme under normal UK VAT rules (as if the lot had been sold with a † symbol). Subject to HMRC's rules, you can then reclaim the VAT charged through your own VAT return.
	* and Ω	Subject to HMRC's rules, you can reclaim the Import VAT charged on the hammer price through your own VAT return when you are in receipt of a C79 form issued by HMRC. The VAT amount in the buyer's premium is invoiced under Margin Scheme rules so cannot normally be claimed back. However, if you request to be re-invoiced outside of the Margin Scheme under standard VAT rules (as if the lot had been sold with a † symbol) then, subject to HMRC's rules, you can reclaim the VAT charged through your own VAT return.
EU VAT registered buyer (please refer to the below category if the UK has withdrawn from the EU without an agreed transition deal)	No Symbol and α	The VAT amount in the buyer's premium cannot be refunded. However, on request we can re-invoice you outside of the VAT Margin Scheme under normal UK VAT rules (as if the lot had been sold with a † symbol). See below for the rules that would then apply.
	†	If you provide us with your EU VAT number we will not charge VAT on the buyer's premium . We will also refund the VAT on the hammer price if you ship the lot from the UK and provide us with proof of shipping, within three months of collection.
	* and Ω	The VAT amount on the hammer price and in the buyer's premium cannot be refunded. However, on request we can re-invoice you outside of the VAT Margin Scheme under normal UK VAT rules (as if the lot had been sold with a † symbol). See above for the rules that would then apply.
Non-EU buyer or Non-VAT registered EU buyer (if the UK has withdrawn from the EU without an agreed transition deal) or EU VAT registered buyer (if the UK has withdrawn from the EU without an agreed transition deal)		If you meet ALL of the conditions in notes 1 to 3 below we will refund the following tax charges:
	No Symbol	We will refund the VAT amount in the buyer's premium .
	† and α	We will refund the VAT charged on the hammer price . VAT on the buyer's premium can only be refunded if you are an overseas business. The VAT amount in the buyer's premium cannot be refunded to non-trade clients.
	‡ (wine only)	No Excise Duty or Clearance VAT will be charged on the hammer price providing you export the wine while 'in bond' directly outside the EU or, if the UK has withdrawn from the EU without an agreed transition deal, outside of the UK using an Excise authorised shipper. VAT on the buyer's premium can only be refunded if you are an overseas business. The VAT amount in the buyer's premium cannot be refunded to non-trade clients.
	* and Ω	We will refund the Import VAT charged on the hammer price and the VAT amount in the buyer's premium .

1. We **CANNOT** offer refunds of VAT amounts or Import VAT to buyers who do not meet all applicable conditions in full. If you are unsure whether you will be entitled to a refund, please contact Client Services at the address below **before you bid**.
2. No VAT amounts or Import VAT will be refunded where the total refund is under £100.
3. To receive a refund of VAT amounts/Import VAT (as applicable) a non-EU or EU

buyer (as applicable) must:
(a) have registered to bid with an address outside of the EU (prior to the UK withdrawing from the EU without an agreed transition deal) or UK (after the UK has withdrawn from the EU without an agreed transition deal); **and**
(b) provide immediate proof of correct export out of the EU or UK (as applicable) pursuant to (a) above within the required time frames of: 30 days via

a 'controlled export' for * and Ω **lots**. All other **lots** must be exported within three months of collection.
4. Details of the documents which you must provide to us to show satisfactory proof of export/shipping are available from our VAT team at the address below.
We charge a processing fee of £35.00 per invoice to check shipping/export documents. We will waive this processing fee if

you appoint Christie's Shipping Department to arrange your export/shipping.
5. If you appoint Christie's Art Transport or one of our authorised shippers to arrange your export/shipping we will issue you with an export invoice with the applicable VAT or duties cancelled as outlined above. If you later cancel or change the shipment in a manner that infringes the rules outlined above we will issue a

revised invoice charging you all applicable taxes/charges.
6. If you ask us to re-invoice you under normal UK VAT rules (as if the **lot** had been sold with a † symbol) instead of under the Margin Scheme the **lot** may become ineligible to be resold using the Margin Schemes. Prior to the UK withdrawing from the EU without an agreed transition deal, **movement within the EU must be within 3 months**

from the date of sale. You should take professional advice if you are unsure how this may affect you.
7. All re-invoicing requests must be received within four years from the date of sale.
If you have any questions about VAT refunds please contact Christie's Client Services on info@christies.com
Tel: +44 (0)20 7389 2886.
Fax: +44 (0)20 7839 1611.

SYMBOLS USED IN THIS CATALOGUE

The meaning of words coloured in **bold** in this section can be found at the end of the section of the catalogue headed 'Conditions of Sale'.

○

Christie's has a direct financial interest in the lot. See Important Notices and Explanation of Cataloguing Practice.

△

Owned by Christie's or another **Christie's Group** company in whole or part. See Important Notices and Explanation of Cataloguing Practice.

◆

Christie's has a direct financial interest in the **lot** and has funded all or part of our interest with the help of someone else. See Important Notices and Explanation of Cataloguing Practice.

□

Bidding by interested parties.

λ

Artist's Resale Right. See Section D3 of the Conditions of Sale.

•

Lot offered without **reserve** which will be sold to the highest bidder regardless of the pre-sale estimate in the catalogue.

~

Lot incorporates material from endangered species which could result in export restrictions. See Section H2(c) of the Conditions of Sale.

ψ

Lot incorporates material from endangered species which is shown for display purposes only and is not for sale. See Section H2(h) of the Conditions of Sale.

†, *, Ω, α, ‡

See VAT Symbols and Explanation.

■

See Storage and Collection Page.

Please note that **lots** are marked as a convenience to you and we shall not be liable for any errors in, or failure to, mark a **lot**.

IMPORTANT NOTICES

CHRISTIE'S INTEREST IN PROPERTY CONSIGNED FOR AUCTION

△ Property Owned in part or in full by Christie's

From time to time, Christie's may offer a **lot** which it owns in whole or in part. Such property is identified in the catalogue with the symbol △ next to its **lot** number. Where Christie's has an ownership or financial interest in every **lot** in the catalogue, Christie's will not designate each **lot** with a symbol, but will state its interest in the front of the catalogue.

○ Minimum Price Guarantees

On occasion, Christie's has a direct financial interest in the outcome of the sale of certain lots consigned for sale. This will usually be where it has guaranteed to the Seller that whatever the outcome of the auction, the Seller will receive a minimum sale price for the work. This is known as a minimum price guarantee. Where Christie's holds such financial interest we identify such **lots** with the symbol ○ next to the **lot** number.

○◆ Third Party Guarantees/Irrevocable bids

Where Christie's has provided a Minimum Price Guarantee it is at risk of making a loss, which can be significant, if the **lot** fails to sell. Christie's therefore sometimes chooses to share that risk with a third party who agrees prior to the auction to place an irrevocable written bid on the lot. If there are no other higher bids, the third party commits to buy the lot at the level of their irrevocable written bid. In doing so, the third party takes on all or part of the risk of the **lot** not being sold. **Lots** which are subject to a third party guarantee arrangement are identified in the catalogue with the symbol ○◆.

In most cases, Christie's compensates the third party in exchange for accepting this risk. Where the third party is the successful bidder, the third party's remuneration is based on a fixed financing fee. If the third party is not the successful bidder, the remuneration may either be based on a fixed fee or an amount calculated against the final **hammer price**. The third party may also bid for the **lot** above the irrevocable written bid. Where the third party is the successful bidder, Christie's will report the **purchase price** net of the fixed financing fee.

Third party guarantors are required by us to disclose to anyone they are advising their financial interest in any **lots** they are guaranteeing. However, for the avoidance of any doubt, if you are advised by or bidding through an agent on a **lot** identified as being subject to a third party guarantee you should always ask your agent to confirm whether or not he or she has a financial interest in relation to the **lot**.

□ Bidding by parties with an interest

When a party with a direct or indirect interest in the **lot** who may have knowledge of the **lot's reserve** or other material information may be bidding on the **lot**, we will mark the **lot** with this symbol □. This interest can include beneficiaries of an estate that consigned the **lot** or a joint owner of a **lot**. Any interested party that successfully bids on a **lot** must comply with Christie's Conditions of Sale, including paying the **lot's** full Buyer's Premium plus applicable taxes.

Post-catalogue notifications

In certain instances, after the catalogue has been published, Christie's may enter into an arrangement or become aware of bidding that would have required a catalogue symbol. In those instances, a pre-sale or pre-**lot** announcement will be made.

Other Arrangements

Christie's may enter into other arrangements not involving bids. These include arrangements where Christie's has given the Seller an Advance on the proceeds of sale of the **lot** or where Christie's has shared the risk of a guarantee with a partner without the partner being required to place an irrevocable written bid or otherwise participating in the bidding on the **lot**. Because such arrangements are unrelated to the bidding process they are not marked with a symbol in the catalogue.

Please see <http://www.christies.com/financial-interest/> for a more detailed explanation of minimum price guarantees and third party financing arrangements.

POST 1950 FURNITURE

All items of post-1950 furniture included in this sale are items either not originally supplied for use in a private home or sold as collector's items. These items may not comply with the provisions of the Furniture and Furnishings (Fire) (Safety) Regulations 1988 (as amended in 1989, 1993 and 2010, the "Regulations"). Accordingly, these items should not be used as furniture in your home in their current condition. If you do intend to use such items for this purpose, you must first ensure that they are reupholstered, restuffed and/or recovered (as appropriate) in order that they comply with the provisions of the Regulations.

EXPLANATION OF CATALOGUING PRACTICE

Terms used in this catalogue have the meanings ascribed to them below. Please note that all statements in a catalogue as to authorship are made subject to the provisions of the Conditions of Sale, including the **authenticity warranty**. Our use of these expressions does not take account of the **condition** of the **lot** or of the extent of any restoration. Buyers are advised to inspect the property themselves. Written condition reports are usually available on request.

A term and its definition listed under 'Qualified Headings' is a **qualified** statement as to authorship. While the use of this term is based upon careful study and represents the opinion of specialists, Christie's and the consignor assume no risk, liability and responsibility for the **authenticity** of authorship of any **lot** in this catalogue described by this term, and the authenticity warranty shall not be available with respect to **lots** described using this term.

JEWELLERY

"**Boucheron**": when maker's name appears in the title, in Christie's opinion it is by that maker.

"**Mount by Boucheron**": in Christie's opinion the setting has been created by the jeweller using stones originally supplied by the jeweller's client.

QUALIFIED HEADINGS

"**Signed Boucheron / Signature Boucheron**": in Christie's **qualified** opinion has a signature by the jeweller.

"With maker's mark for Boucheron": in Christie's **qualified** opinion has a mark denoting the maker.

Periods

Art Nouveau 1895-1910
Belle Epoque 1895-1914
Art Deco 1915-1935
Retro 1940s

FABERGÉ

QUALIFIED HEADINGS

"**Marked Fabergé, Workmaster ...**": in Christie's **qualified** opinion a work of the master's workshop inscribed with his name or initials and his workmaster's initials.

"**By Fabergé ...**": in Christie's **qualified** opinion, a work of the master's workshop, but without his mark.

"**In the style of ...**": in Christie's **qualified** opinion a work of the period of the master and closely related to his style.

"**Bearing marks ...**": in Christie's **qualified** opinion not a work of the master's workshop and bearing later marks.



IDENTITY VERIFICATION

From January 2020, new anti-money laundering regulations require Christie's and other art businesses to verify the identity of all clients. To register as a new client, you will need to provide the following documents, or if you are an existing client, you will be prompted to provide any outstanding documents the next time you transact.

Private individuals:

- A copy of your passport or other government-issued photo ID
- Proof of your residential address (such as a bank statement or utility bill) dated within the last three months

Please upload your documents through your christies.com account: click 'My Account' followed by 'Complete Profile'. You can also email your documents to info@christies.com or provide them in person.

Organisations:

- Formal documents showing the company's incorporation, its registered office and business address, and its officers, members and ultimate beneficial owners
- A passport or other government-issued photo ID for each authorised user

Please email your documents to info@christies.com or provide them in person.

CHRISTIE'S

WRITTEN BIDS FORM

CHRISTIE'S LONDON

IMPORTANT JEWELS

THURSDAY 30 JULY 2020 AT 11.00 AM

8 King Street, St. James's, London SW1Y 6QT

CODE NAME: VIRGINIE

SALE NUMBER: 18373

(Dealers billing name and address must agree with tax exemption certificate. Once issued, we cannot change the buyer's name on an invoice or re-issue the invoice in a different name.)

BID ONLINE FOR THIS SALE AT CHRISTIES.COM

BIDDING INCREMENTS

Bidding generally starts below the **low estimate** and increases in steps (bid increments) of up to 10 per cent. The auctioneer will decide where the bidding should start and the bid increments. Written bids that do not conform to the increments set below may be lowered to the next bidding interval.

UK£100 to UK£2,000	by UK£100s
UK£2,000 to UK£3,000	by UK£200s
UK£3,000 to UK£5,000	by UK£200, 500, 800 (eg UK£4,200, 4,500, 4,800)
UK£5,000 to UK£10,000	by UK£500s
UK£10,000 to UK£20,000	by UK£1,000s
UK£20,000 to UK£30,000	by UK£2,000s
UK£30,000 to UK£50,000	by UK£2,000, 5,000, 8,000 (eg UK£32,000, 35,000, 38,000)
UK£50,000 to UK£100,000	by UK£5,000s
UK£100,000 to UK£120,000	by UK£10,000s
Above UK£200,000	at auctioneer's discretion

The **auctioneer** may vary the increments during the course of the auction at his or her own discretion.

- I request Christie's to bid on the stated **lots** up to the maximum bid I have indicated for each **lot**.
- I understand that if my bid is successful, the amount payable will be the sum of the **hammer price** and the **buyer's premium** (together with any taxes chargeable on the **hammer price** and **buyer's premium** and any applicable Artist's Resale Royalty in accordance with the Conditions of Sale - Buyer's Agreement). The **buyer's premium** rate shall be an amount equal to 25% of the **hammer price** of each **lot** up to and including £225,000, 20% on any amount over £225,000 up to and including £3,000,000 and 13.5% of the amount above £3,000,000. For wine and cigars there is a flat rate of 22.5% of the **hammer price** of each **lot** sold.
- I agree to be bound by the Conditions of Sale printed in the catalogue.
- I understand that if Christie's receive written bids on a **lot** for identical amounts and at the auction these are the highest bids on the **lot**, Christie's will sell the **lot** to the bidder whose written bid it received and accepted first.
- Written bids submitted on 'no reserve' **lots** will, in the absence of a higher bid, be executed at approximately 50% of the **low estimate** or at the amount of the bid if it is less than 50% of the **low estimate**.
I understand that Christie's written bid service is a free service provided for clients and that, while Christie's will be as careful as it reasonably can be, Christie's will not be liable for any problems with this service or loss or damage arising from circumstances beyond Christie's reasonable control.

Auction Results: +44 (0)20 7839 9060

WRITTEN BIDS MUST BE RECEIVED AT LEAST 24 HOURS BEFORE THE AUCTION BEGINS.

CHRISTIE'S WILL CONFIRM ALL BIDS RECEIVED BY FAX BY RETURN FAX. IF YOU HAVE NOT RECEIVED CONFIRMATION WITHIN ONE BUSINESS DAY, PLEASE CONTACT THE BID DEPARTMENT: TEL: +44 (0)20 7389 2658 • FAX: +44 (0)20 7930 8870 • ON-LINE WWW.CHRISTIES.COM

18373

Client Number (if applicable)

Sale Number

Billing Name (please print)

Address

Postcode

Daytime Telephone

Evening Telephone

Fax (Important)

E-mail

☐ Please tick if you prefer not to receive information about our upcoming sales by e-mail

I have read and understood this written bid form and the Conditions of Sale - Buyer's Agreement

Signature

If you have not previously bid or consigned with Christie's, please attach copies of the following documents. Individuals: government-issued photo identification (such as a driving licence, national identity card, or passport) and, if not shown on the ID document, proof of current address, for example a utility bill or bank statement. Corporate clients: a certificate of incorporation. Other business structures such as trusts, offshore companies or partnerships: please contact the Compliance Department at +44 (0)20 7839 9060 for advice on the information you should supply. If you are registering to bid on behalf of someone who has not previously bid or consigned with Christie's, please attach identification documents for yourself as well as the party on whose behalf you are bidding, together with a signed letter of authorisation from that party. New clients, clients who have not made a purchase from any Christie's office within the last two years, and those wishing to spend more than on previous occasions will be asked to supply a bank reference. We also request that you complete the section below with your bank details:

Name of Bank(s)

Address of Bank(s)

Account Number(s)

Name of Account Officer(s)

Bank Telephone Number

PLEASE PRINT CLEARLY

Lot number (in numerical order)	Maximum Bid £ (excluding buyer's premium)	Lot number (in numerical order)	Maximum Bid £ (excluding buyer's premium)

If you are registered within the European Community for VAT/IVA/TVA/BTW/MWST/MOMS Please quote number below:

YOUR CAREER IN THE ART WORLD STARTS HERE

LEARN MORE AT [CHRISTIES.EDU](https://christies.edu)

CHRISTIE'S
EDUCATION

LONDON | NEW YORK | HONG KONG

CONTINUING EDUCATION • ONLINE COURSES

CHRISTIE'S

CHRISTIE'S INTERNATIONAL PLC

François Pinault, Chairman
Guillaume Cerutti, Chief Executive Officer
Stephen Brooks, Deputy Chief Executive Officer
Jussi Pyllkkänen, Global President
François Curiel, Chairman, Europe
Jean-François Palus
Stéphanie Renault
Héloïse Temple-Boyer
Sophie Carter, Company Secretary

INTERNATIONAL CHAIRMEN

Stephen Lash, Chairman Emeritus, Americas
The Earl of Snowdon, Honorary Chairman, EMEA
Charles Cator, Deputy Chairman, Christie's Int.
Xin Li-Cohen, Deputy Chairman, Christie's Int.

CHRISTIE'S EUROPE, MIDDLE EAST, AND AFRICA (EMEA)

Prof. Dr. Dirk Boll, President
Bertold Mueller, Managing Director, EMEA

SENIOR DIRECTORS, EMEA

Zoe Ainscough, Cristian Albu, Marco Almeida,
Maddie Amos, Simon Andrews, Katharine Arnold,
Upasna Bajaj, Mariolina Bassetti, Ellen Berkeley,
Jill Berry, Giovanna Bertazzoni, Lucy Brown,
Peter Brown, Julien Brunie, Olivier Camu,
Jason Carey, Karen Carroll, Sophie Carter,
Karen Cole, Isabelle de La Bruyere, Roland de Lathuy,
Eveline de Proyart, Leila de Vos, Harriet Drummond,
Adele Falconer, Margaret Ford, Edmond Francey,
Roni Gilat-Baharaff, Keith Gill, Leonie Grainger,
Philip Harley, James Hastie, Karl Hermanns,
Rachel Hidderley, Jetske Homan Van Der Heide,
Michael Jeha, Donald Johnston, Erem Kassim-Lakha,
Polly Knewstubb, Nicholas Lambourn, William Lorimer,
Catherine Manson, Susan Miller, Jeremy Morrison,
Nicholas Orchard, Rosalind Patient, Keith Penton,
Henry Pettifer, Will Porter, Julien Pradels, Paul Raison,
Christiane Rantzau, Tara Rastrick, Amjad Rauf,
William Robinson, Alice de Roquemaurel,
Matthew Rubinger, Tim Schmelcher, Katie Siveyer,
John Stainton, Nicola Steel, Annelies Stevens,
Aline Sylla-Walbaum, Sheridan Thompson,
Alexis de Tiesenhausen, Cécile Verdier, Jay Vincze,
David Warren, Harry Williams-Bulkeley,
Tom Woolston, André Zlattinger

CHRISTIE'S ADVISORY BOARD, EUROPE

Pedro Girao, Chairman,
Contessa Giovanni Gaetani dell'Aquila d'Aragona,
Thierry Barbier Mueller, Arpad Busson,
Kemal Has Cingillioglu, Hélène David-Weill,
Bernhard Fischer, I. D. Fürstin zu Fürstenberg,
Rémi Gaston-Dreyfus, Laurence Graff,
Jacques Grange, H.R.H. Prince Pavlos of Greece,
Terry de Gunzburg, Guillaume Houzé,
Alicia Koplowitz, Robert Manoukian,
Contessa Daniela d'Amelio Memmo, Usha Mittal,
Don Morosello Diaz Vittoria Pallavicini,
Polissena Perrone, Maryvonne Pinault,
François de Ricqlès, Eric de Rothschild,
Çiğdem Simavi, Sylvie Winckler

CHRISTIE'S UK

CHAIRMAN'S OFFICE, UK

Orlando Rock, Chairman
Noël Annesley, Honorary Chairman;
Richard Roundell, Vice Chairman;
Robert Copley, Deputy Chairman;
The Earl of Halifax, Deputy Chairman;
Francis Russell, Deputy Chairman;
Nicholas White, Mark Wrey,
Andrew Waters, Jane Blood,
Bernard Williams, Robert Lagneau,
Annabelle Scholar

DIRECTORS, UK

Guy Agazarian, Ksenia Apukhtina,
Alexandra Baker, Piers Boothman, Claire Bramwell,
Louise Broadhurst, Antonia Calnan,
Lucy Campbell, Erin Caswell, Sarah Charles,
Ruth Cornett, Jessica Corsi, Nicky Crosbie,
Laetitia Delaloye, Armelle de Laubier-Rhally,
Freddie De Rougemont, Eugenio Donadoni,
Virginie Dulucq, Christopher O'Neil-Dunne,
Arne Everwijn, Nick Finch, Emily Fisher, Peter Flory,
Nina Foote, Christopher Forrest, Giles Forster,
Zita Gibson, Alexandra Gill, Angus Granlund,
David Gregory, Christine Haines, Annabel Hesketh,
Peter Horwood, Adrian Hume-Sayer, Kate Hunt,
Pippa Jacomb, Simon James, Imogen Kerr,
Tjabel Klok, Tina Law, Adriana Leese, Tom Legh,
Jon-Ross Le Haye, Brandon Lindberg, Noah May,
Murray Macaulay, Graeme Maddison, Sarah Mansfield,
Ottavia Marchitelli, Astrid Mascher, Roger Massey,
Michelle McMullan, Daniel McPherson,
Neil Millen, Leonie Mir, Anoushka Mohamed
Chris Munro, Patricia Nobel, Anthea Peers,
Sara Plumbly, Euthymia Procopé, Lisa Redpath,
Alexandra Reid, Sumiko Roberts, Meghan Russell,
Patrick Saich, Amelie Sarrado, Julie Schutz,
Tom Scott, Valeria Severini, Dominic Simpson,
Nick Sims, Clementine Sinclair, Timothy Triptree,
Mary-Claire Turkington, Thomas Venning, Julie Vial,
Anastasia von Seibold, Gillian Ward, Amelia Walker,
Jud Wei-Ting, Harriet West, Ben Wiggi
Georgina Wilsenach

ASSOCIATE DIRECTORS, UK

James Baskerville, Lucy Beckett, Edmund Bernard,
Harriet Bingham, Hannah Boissier, Sarah Boswell,
Phill Brakefield, Geraldine Breda, Jenny Brown,
Andrew Byrne, Anna Campbell, Laure Camboulives,
Isabelle Cartier Stone, David Cassidy, Alexandra Cawte,
Marie-Louise Chaldecott, Ivy Chan, Jack Coleman,
Amandine Consigny, Claudio Corsi, Hugh Creasy,
Katia Denysova, Grant Deudney, Milo Dickinson,
Amanda Dixon, Ekaterina Dolinina, Tal Draper,
David Ellis, Erola Farre, Paola Saracino Fendi,
Martina Fusari, Pat Galligan, Paul Gallois,
Elisa Galuppi, Constanza Giuliani, Tomasz Gradus,
Adeline Han, Daniel Hawkins, Sophie Hopkins,
Jude Hull, James Hyslop, Wei-Ting Jud, Guady Kelly,
Amy Kent, Julia Kiss, Julie Kizemchuk, Zoe Klemme,
Rachel Koffsky, Rob Leatham, Tessa Lord,
Stephanie Manstein, Annabel Matterson,
Georgie Mawby, David McLachlan, Lynda McLeod,
Toby Monk, Alice Murray, Rosie O'Connor,
Todd Paddon, Clara Paschini, Elisa Peccerillo-Pallister,
Christopher Petre, Samantha Phillips, Antonia Pitt,
Alastair Plumb, Eugene Pooley, Laetitia Pot,
Sarah Rancans, Sarah Reynolds, Marta Saporiti,
Pat Savage, Claudia Schurch, Hannah Schweiger,
Angus Scott, Leah Sheehan, Graham Smithson,
Iain Tarling, Sarah Tennant, Susann Theuerkauf,
Flora Turnbull, Damian Vesey, Alice Vincent,
Annie Wallington, Tony Walshe, Annette Wilson,
Julian Wilson, Kelsey Winney, Miriam Winsor-Alio,
Suzanne Yalcin-Pennings, Charlotte Young,
Emily Younger, Pascale Zaidel



Lot 195



CHRISTIE'S

8 KING STREET ST. JAMES'S LONDON SW1Y 6QT

CHRISTIE'S LONDON IMPORTANT JEWELS 30 JULY 2020 18373

IMPORTANT JEWELS

London 30 July 2020



CHRISTIE'S